

PART OF THE SE.1/4, OF SEC. 16, T.5N., R.1W., S.L.B. & M.

CROWN POINTE PHASE III

A PLANNED RESIDENTIAL UNIT DEVELOPMENT

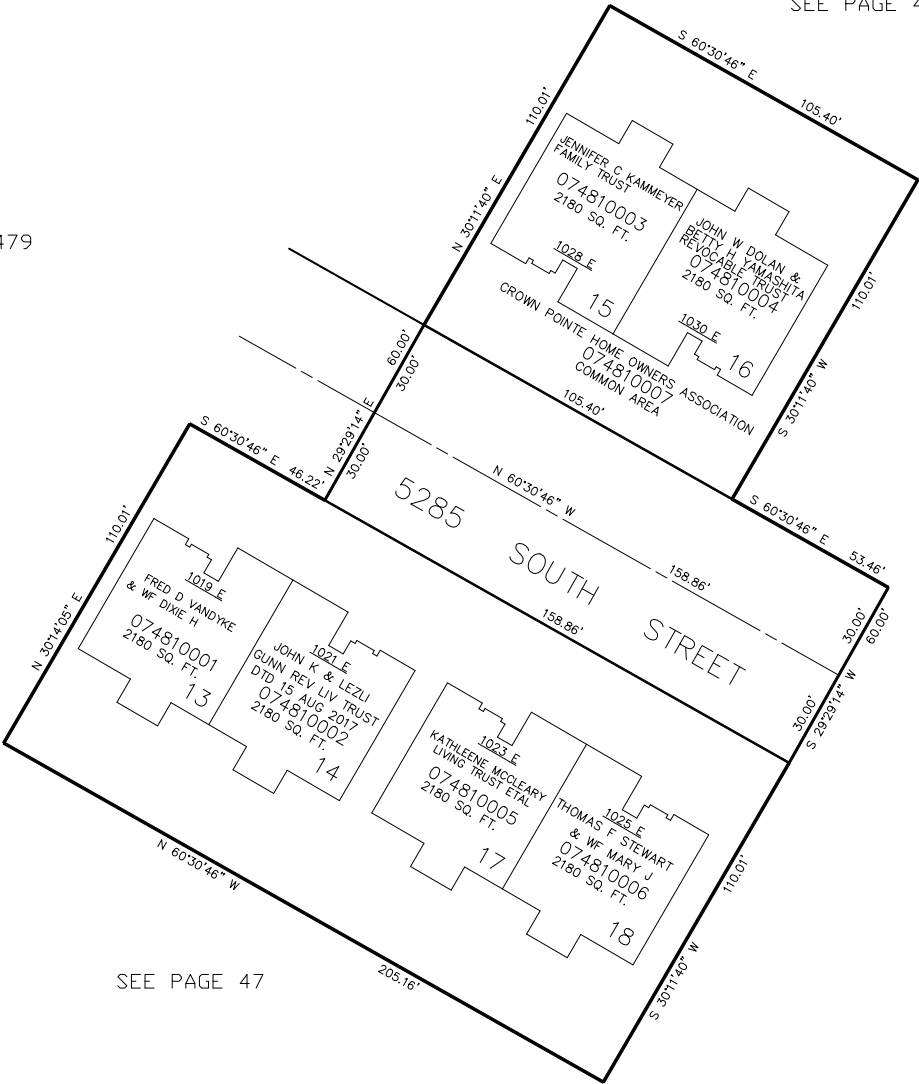
IN SOUTH OGDEN CITY

SCALE 1" = 30'

TAXING UNIT: 27

SEE PAGE 415

SEE PAGE 479



SEE PAGE 47

SEE PAGE 47

FOR COMPLETE ENG DATA SEE
ORIGINAL DEDICATION PLAT IN
BOOK 41, PAGE 22 OF RECORDS.

FOR TAX PURPOSES ONLY