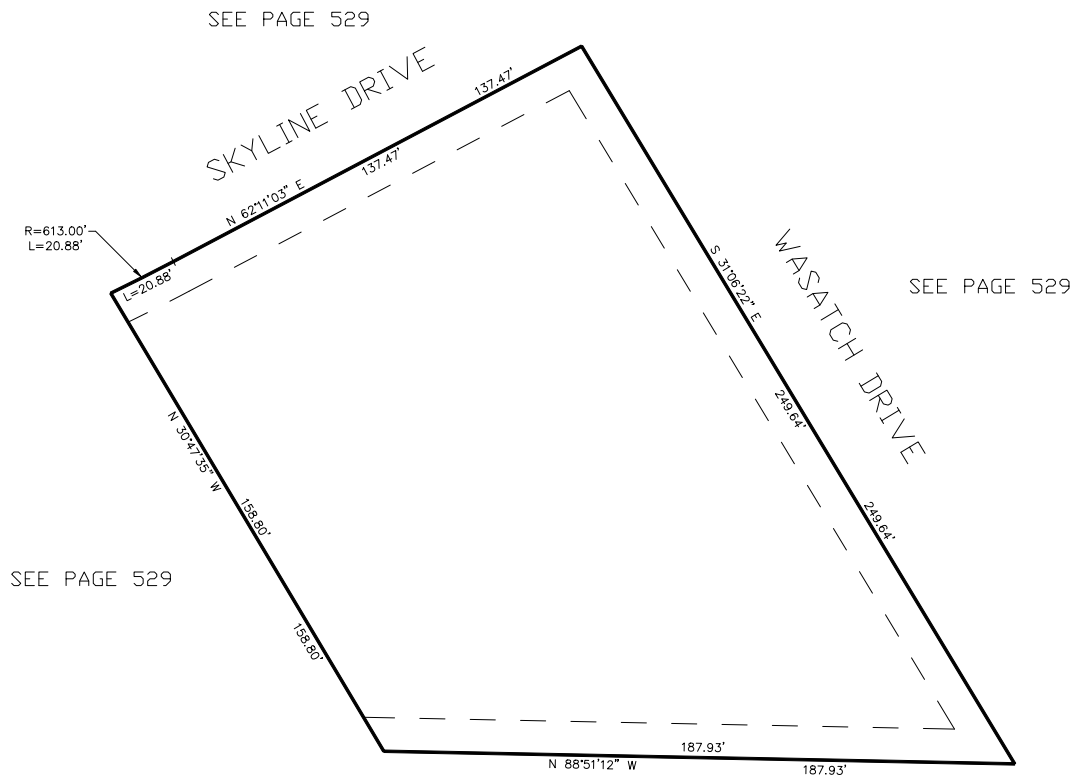


PART OF THE S.E.1/4, OF SECTION 22, T.5N., R.1W., S.L.B. & M.
SKYLINE CONDOMINIUM
IN SOUTH OGDEN CITY
SCALE 1" = 30'

TAXING UNIT: 75



UNIT NO.	SERIAL NO.	OWNERSHIP
1	075620001	SKYLINE PROPERTY INVESTMENTS LLC
2	075620002	J & S NIX HOLDING, LLC
3	075620003	HEALTH SOLUTIONS CHIROPRACTIC LLC
4	075620004	HEALTH SOLUTIONS CHIROPRACTIC LLC
5	075620005	SKYLINE MANAGEMENT OF OGDEN, LLC
COMMON AREA	075620006	COMMON AREA FOR SKYLINE CONDOMINIUMS

10' UTILITY & DRAINAGE EASEMENTS EACH
SIDE OF PROPERTY LINES AS INDICATED
BY DASHED LINES EXCEPT AS OTHERWISE
SHOWN.

FOR COMPLETE ENG DATA SEE
ORIGINAL DEDICATION PLAT IN
BOOK 52, PAGE 4 OF RECORDS.