

PART OF THE NW 1/4, OF SECTION 18, T.5N., R.1W., S.L.B. & M.
RIVER PARK DRIVE SAM'S CLUB SUB

IN RIVERDALE CITY
SCALE 1" = 100'

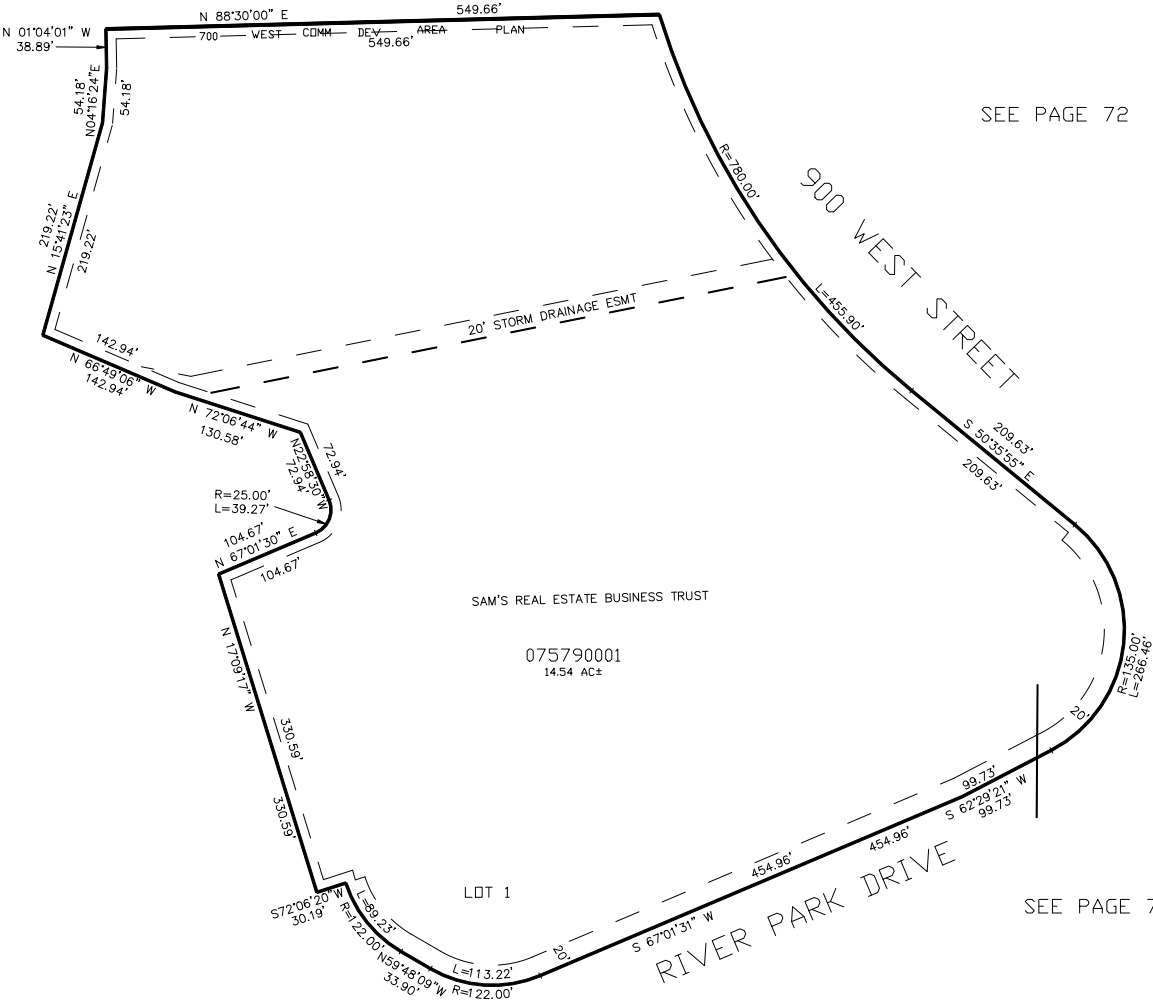
TAXING UNIT: 506

SEE PAGE 246

SEE PAGE 72

SEE PAGE 72

SEE PAGE 72



10' UTILITY & DRAINAGE EASEMENTS EACH
SIDE OF PROPERTY LINES AS INDICATED
BY DASHED LINES EXCEPT AS OTHERWISE
SHOWN.

FOR COMPLETE ENG DATA SEE
ORIGINAL DEDICATION PLAT IN
BOOK 54, PAGE 58 OF RECORDS.