

PART OF THE N.W. 1/4 OF SEC. 22, T.5N, R.1W, S.L.B. & M.
FOXCHASE COMMERCIAL DEVELOPMENT SUBDIVIDING PARCEL 2

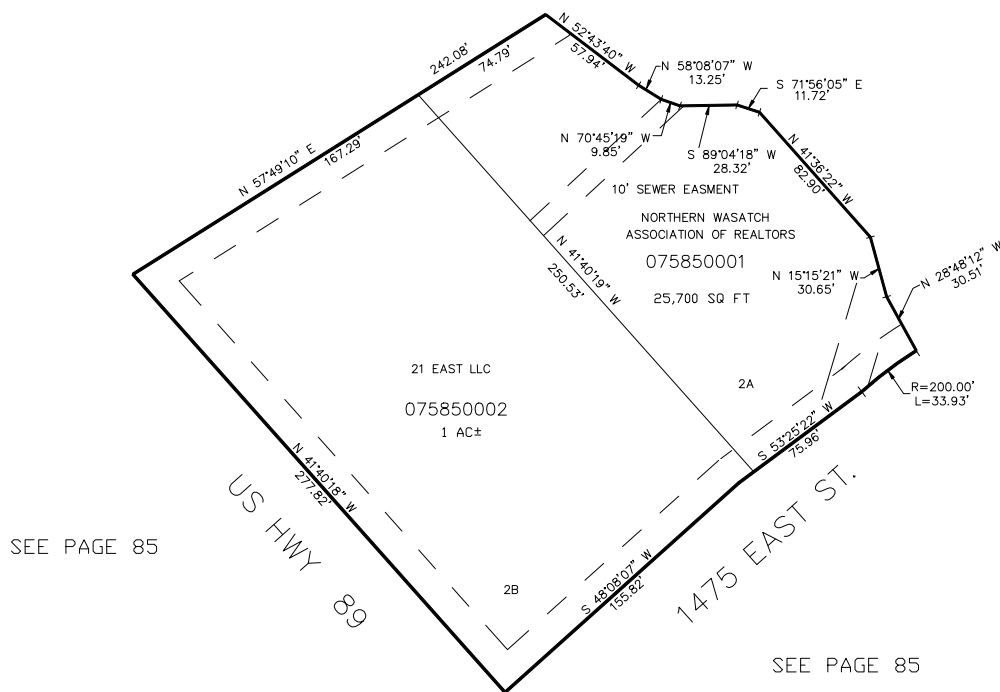
IN WEBER COUNTY

TAXING UNIT: 27

SCALE 1" = 50'

SEE PAGE 85

SEE PAGE 502



15' UTILITY & DRAINAGE EASEMENTS EACH
 SIDE OF PROPERTY LINES AS INDICATED
 BY DASHED LINES EXCEPT AS OTHERWISE
 SHOWN.

FOR COMPLETE ENG DATA SEE
 ORIGINAL DEDICATION PLAT IN
 BOOK 55, PAGE 04 OF RECORDS.