

PART OF THE NW & SW.1/4, OF SECTION 16, T.5N., R.1W., S.L.B. & M.

SOUTH OGDEN PROFESSIONAL PLAZA
A COMMERCIAL CONDOMINIUM AMENDED

TAXING UNIT: 27

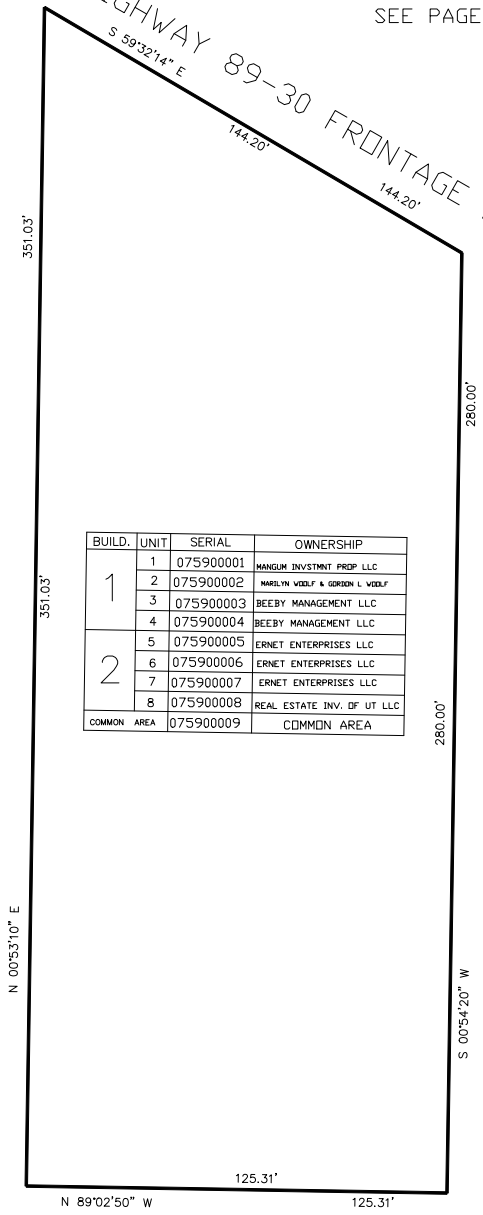
IN SOUTH OGDEN CITY
SCALE 1" = 30'

SEE PAGE 16

SEE PAGE 16

SEE PAGE 16

HIGHWAY 89-30 FRONTAGE ROAD
S 59°32'14" E
144.20'
144.20'



BUILD.	UNIT	SERIAL	OWNERSHIP
1	1	075900001	MANGUM INVESTMENT PROP. LLC
	2	075900002	MARILYN WEDOLF & GORDON L. WEDOLF
	3	075900003	BEEBY MANAGEMENT LLC
	4	075900004	BEEBY MANAGEMENT LLC
2	5	075900005	ERNET ENTERPRISES LLC
	6	075900006	ERNET ENTERPRISES LLC
	7	075900007	ERNET ENTERPRISES LLC
	8	075900008	REAL ESTATE INV. OF UT LLC
COMMON AREA		075900009	COMMON AREA

10' UTILITY & DRAINAGE EASEMENTS EACH
SIDE OF PROPERTY LINES AS INDICATED
BY DASHED LINES EXCEPT AS OTHERWISE
SHOWN.

FOR COMPLETE ENG. DATA SEE
ORIGINAL DEDICATION PLAT IN
BOOK 55, PAGE 44 OF RECORDS.

SEE PAGE 37