

PART OF THE NW.1/4, OF SECTION 25, T.5N., R.1W., S.L.B. & M.  
CEDAR COVE ESTATES AMENDED, LOTS 17-19R

IN WEBER COUNTY

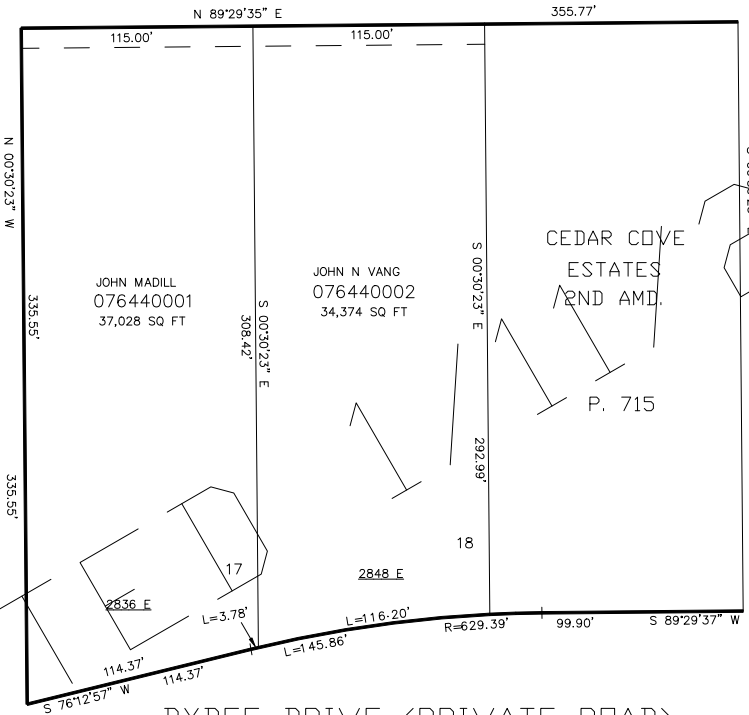
TAXING UNIT: 54

SCALE 1" = 50'

SEE PAGE 368

SEE PAGE 618

SEE PAGE 619



BYBEE DRIVE (PRIVATE ROAD)

SEE PAGE 618

10' UTILITY & DRAINAGE EASEMENTS EACH  
SIDE OF PROPERTY LINES AS INDICATED  
BY DASHED LINES EXCEPT AS OTHERWISE  
SHOWN.

FOR COMPLETE ENG DATA SEE  
ORIGINAL DEDICATION PLAT IN  
BOOK 59, PAGE 58 OF RECORDS.

\*FOR TAX PURPOSES ONLY\*

BK 05-04