

PART OF THE SE.1/4, OF SECTION 23, T.5N., R.1W., S.L.B. & M.

666

# KENT SUBDIVISION

IN WEBER COUNTY

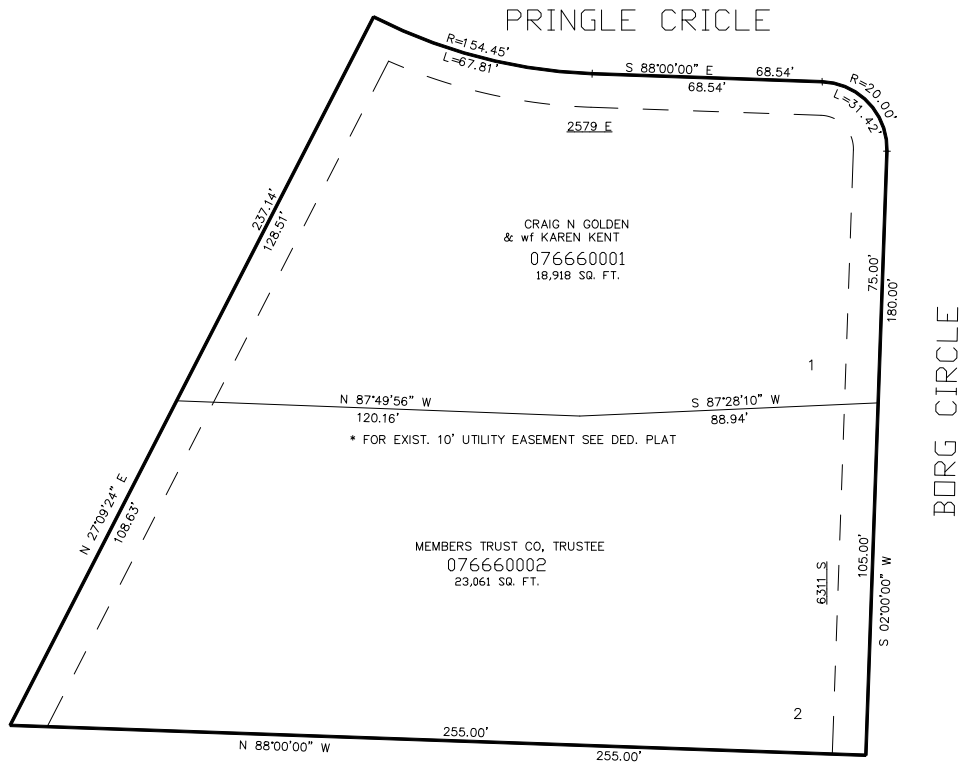
TAXING UNIT: 159

SCALE 1" = 30'

SEE PAGE 94

SEE PAGE 95

SEE PAGE 94



10' UTILITY & DRAINAGE EASEMENTS EACH  
SIDE OF PROPERTY LINES AS INDICATED  
BY DASHED LINES EXCEPT AS OTHERWISE  
SHOWN.

FOR COMPLETE ENG DATA SEE  
ORIGINAL DEDICATION PLAT IN  
BOOK 61, PAGE 97 OF RECORDS.