

PART OF THE S.E.1/4, OF SECTION 15, T.5N., R.1W., S.L.B. & M.

SOUTH HARRISON PLAZA COND

711

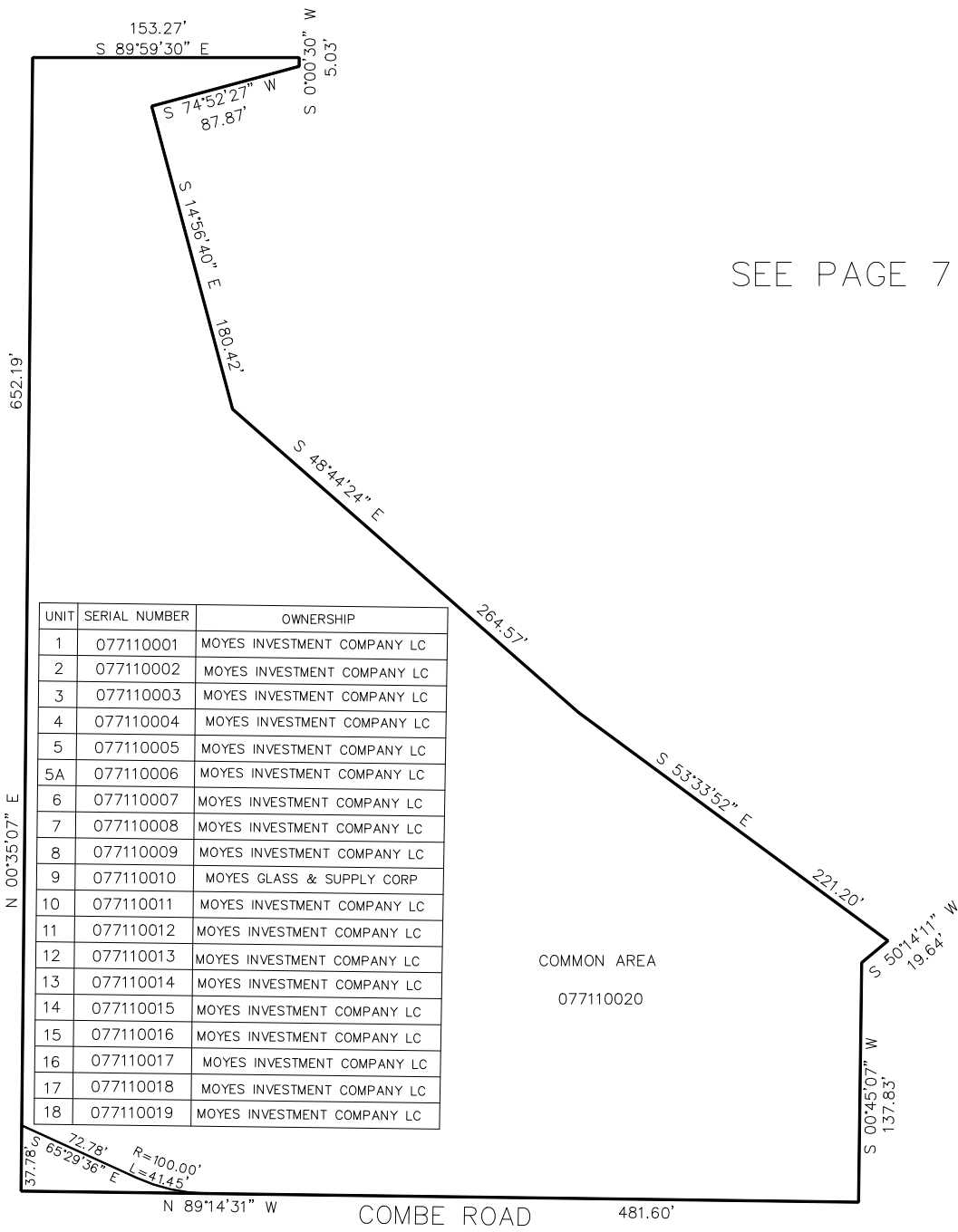
TAXING UNIT: 540

IN SOUTH OGDEN CITY

SCALE 1" = 100'

SEE PAGE 4

SEE PAGE 7



SEE PAGE 7

FOR COMPLETE ENG DATA SEE
ORIGINAL DEDICATION PLAT IN
BOOK 67, PAGES 99 TO 103 OF
RECORDS.