

PART OF THE NE.1/4, OF SECTION 23, T.5N., R.1W., S.L.B. & M.  
WOODLAND ESTATES SUBDIVISION – UNIT 2 1ST AMENDMENT

IN WEBER COUNTY  
SCALE 1" = 40'

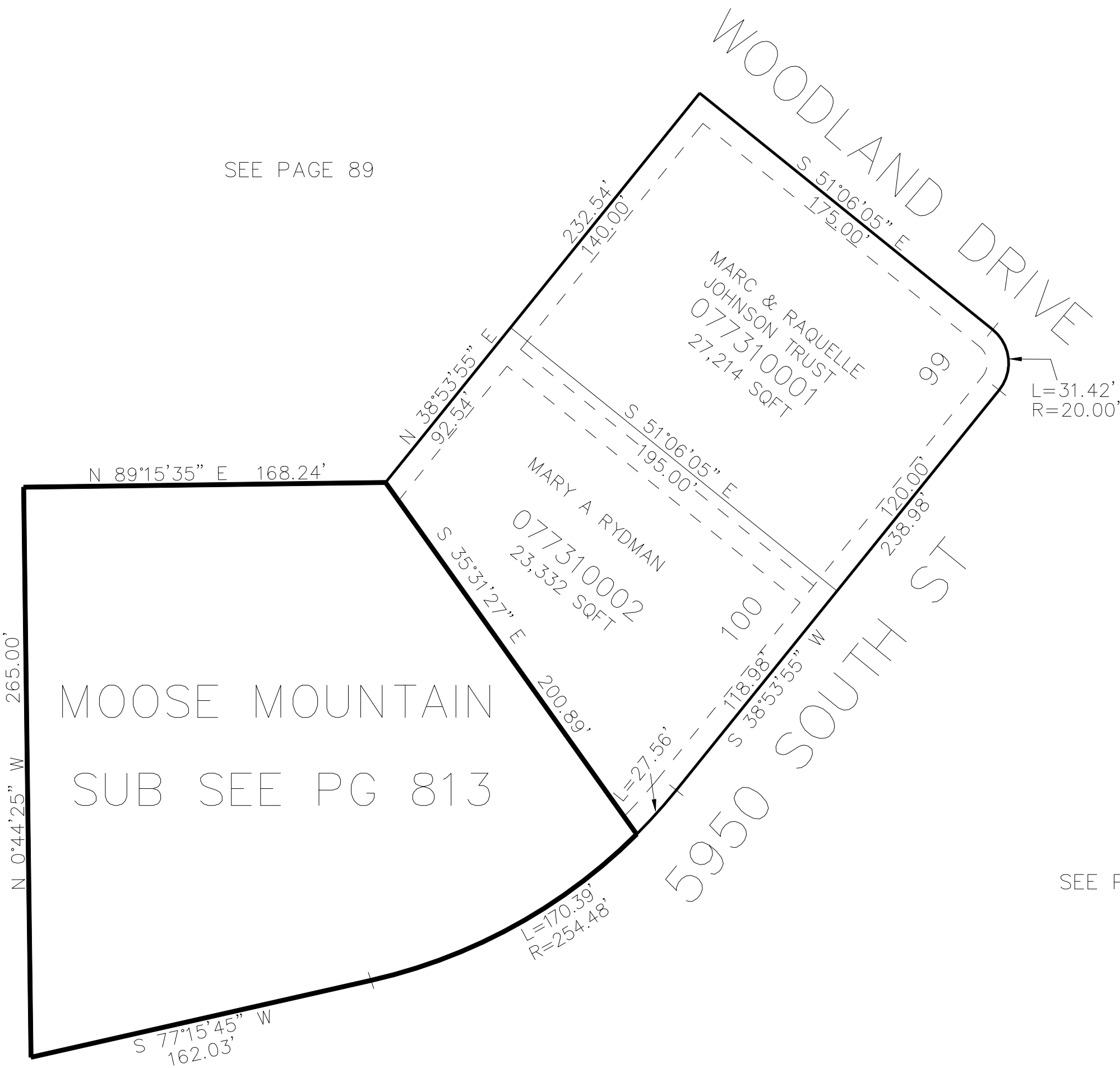
TAXING UNIT: 159

SEE PAGE 89

SEE PAGE 89

SEE PAGE 89

SEE PAGE 89



10' UTILITY & DRAINAGE EASEMENTS EACH  
SIDE OF PROPERTY LINES AS INDICATED  
BY DASHED LINES EXCEPT AS OTHERWISE  
SHOWN.

FOR COMPLETE ENG DATA SEE  
ORIGINAL DEDICATION PLAT IN  
BOOK 71, PAGE 78 OF RECORDS.