

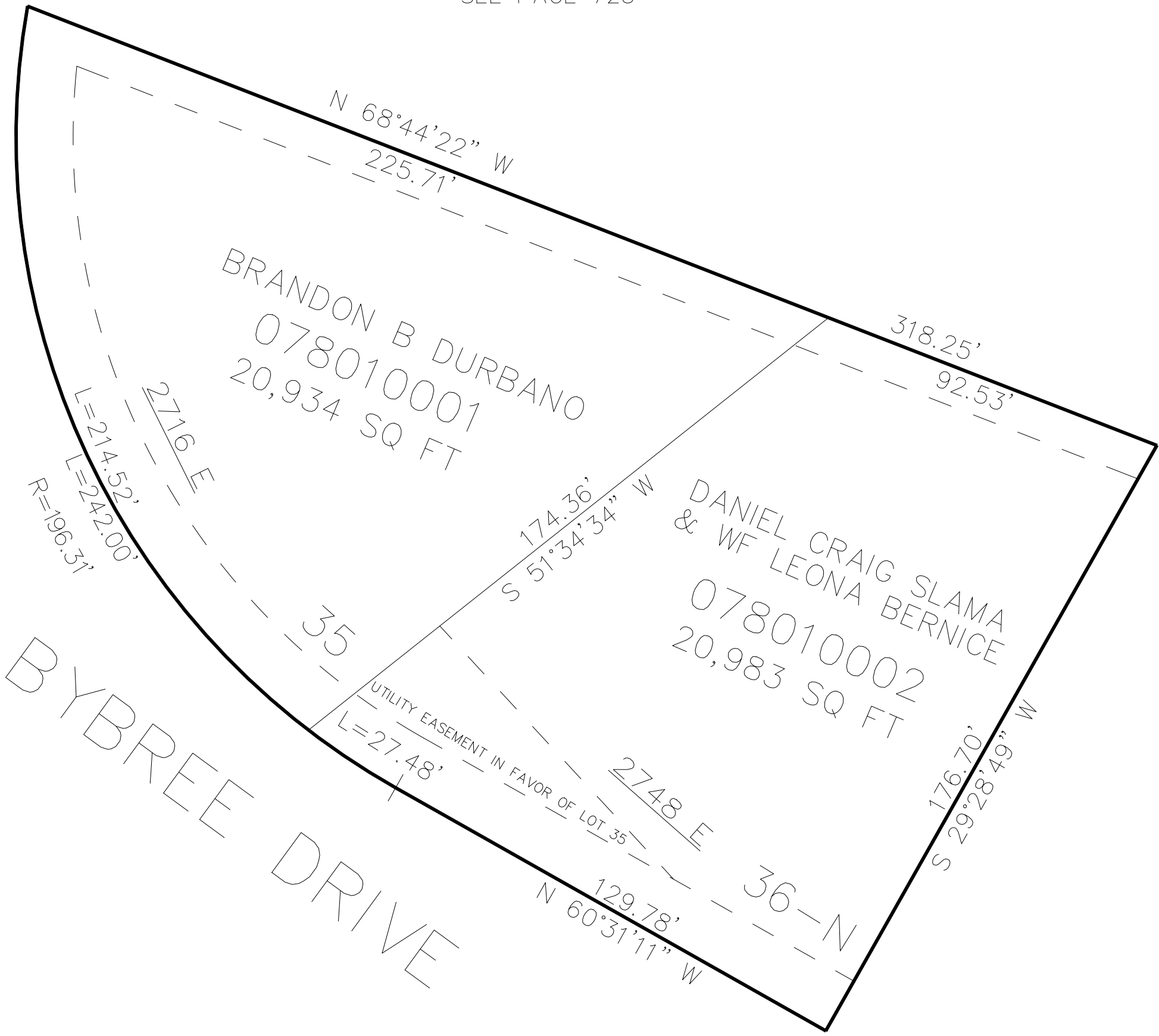
PART OF THE NE. 1/4, OF SECTION 26, T.5N., R.1W., S.L.B. & M.  
CEDAR COVE ESTATES 5TH AMENDMENT

801

TAXING UNIT: 54

IN WEBER COUNTY  
SCALE 1" = 30'

SEE PAGE 723



SEE PAGE 723

SEE PAGE 723

10' UTILITY & DRAINAGE EASEMENTS EACH  
SIDE OF PROPERTY LINES AS INDICATED  
BY DASHED LINES EXCEPT AS OTHERWISE  
SHOWN.

FOR COMPLETE ENG DATA SEE  
ORIGINAL DEDICATION PLAT IN  
BOOK 86, PAGE 80 OF RECORDS.