

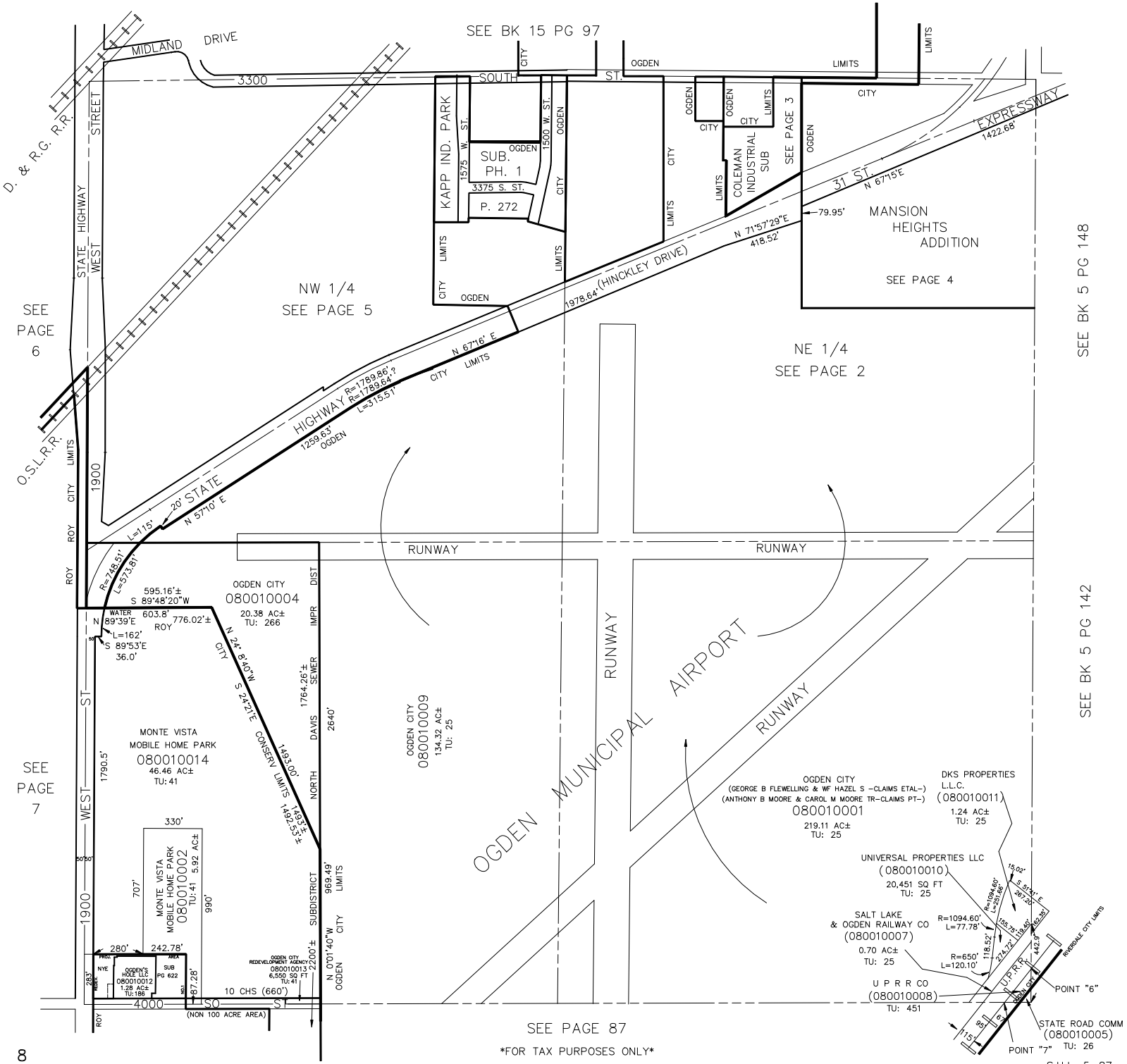
SECTION 1, T.5N., R.2W., S.L.B. & M.

OGDEN CITY, ROY CITY, & RIVERDALE DISTRICT

TAXING UNITS: 23,25,26,41,186,265,451

SCALE 1" = 400'

1



SEE PAGE 87

FOR TAX PURPOSES ONLY

8

S.H.L. 5-87

SEE BK 5 PG 148

SEE BK 5 PG 142

SEE PAGE 6

SEE PAGE 7

NW 1/4
SEE PAGE 5

NE 1/4
SEE PAGE 2

SEE BK 15 PG 97

SEE PAGE 4

SEE PAGE 3

OGDEN CITY
(GEORGE B FLEWELLING & WF HAZEL S -CLAIMS ETAL-)
(ANTHONY B MOORE & CAROL M MOORE TR-CLAIMS PT-)
080010001
219.11 AC±
TU: 25

DKS PROPERTIES
L.L.C.
(080010011)
1.24 AC±
TU: 25

UNIVERSAL PROPERTIES LLC
(080010010)
20,451 SQ FT
TU: 25

SALT LAKE
& OGDEN RAILWAY CO
(080010007)
0.70 AC±
TU: 25

U P R R CO
(080010008)
TU: 451

STATE ROAD COMM
(080010005)
POINT "6"
TU: 26

POINT "7"
TU: 26

OGDEN CITY
080010004
20.38 AC±
TU: 266

MONTE VISTA
MOBILE HOME PARK
080010014
46.46 AC±
TU: 41

MONTE VISTA
MOBILE HOME PARK
080010002
TU: 41

OGDEN CITY
080010009
134.32 AC±
TU: 25

OGDEN CITY
080010001
6.550 AC±
TU: 41

10 CHS (660')

(NON 100 ACRE AREA)