

PART OF THE S.E. 1/4 OF SEC. 2, T.5N., R.2W., S.L.B. & M.

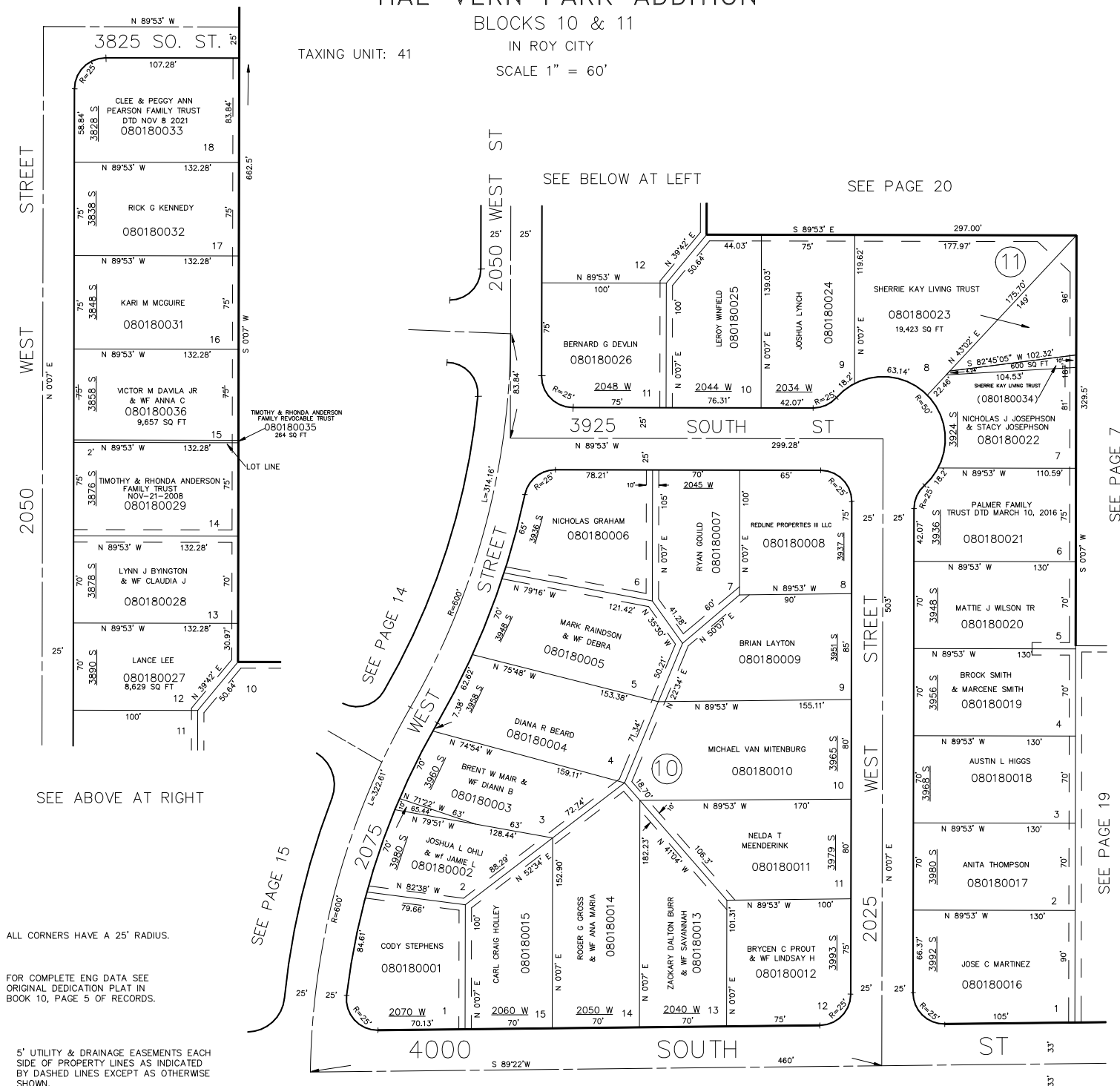
# HAL-VERN PARK ADDITION

BLOCKS 10 &amp; 11

IN ROY CITY

SCALE 1" = 60'

TAXING UNIT: 41



ALL CORNERS HAVE A 25' RADIUS.

FOR COMPLETE ENG DATA SEE  
ORIGINAL DEDICATION PLAT IN  
BOOK 10, PAGE 5 OF RECORDS.

5' UTILITY & DRAINAGE EASEMENTS EACH  
SIDE OF PROPERTY LINES AS INDICATED  
BY DASHED LINES EXCEPT AS OTHERWISE  
SHOWN.

SEE PAGE 52

\*FOR TAX PURPOSES ONLY\*

S.H.L. 4-87