

S.W. 1/4
SECTION 6, T.5N., R.2W., S.L.B. & M.

TAXING UNIT: 376, 397, 454

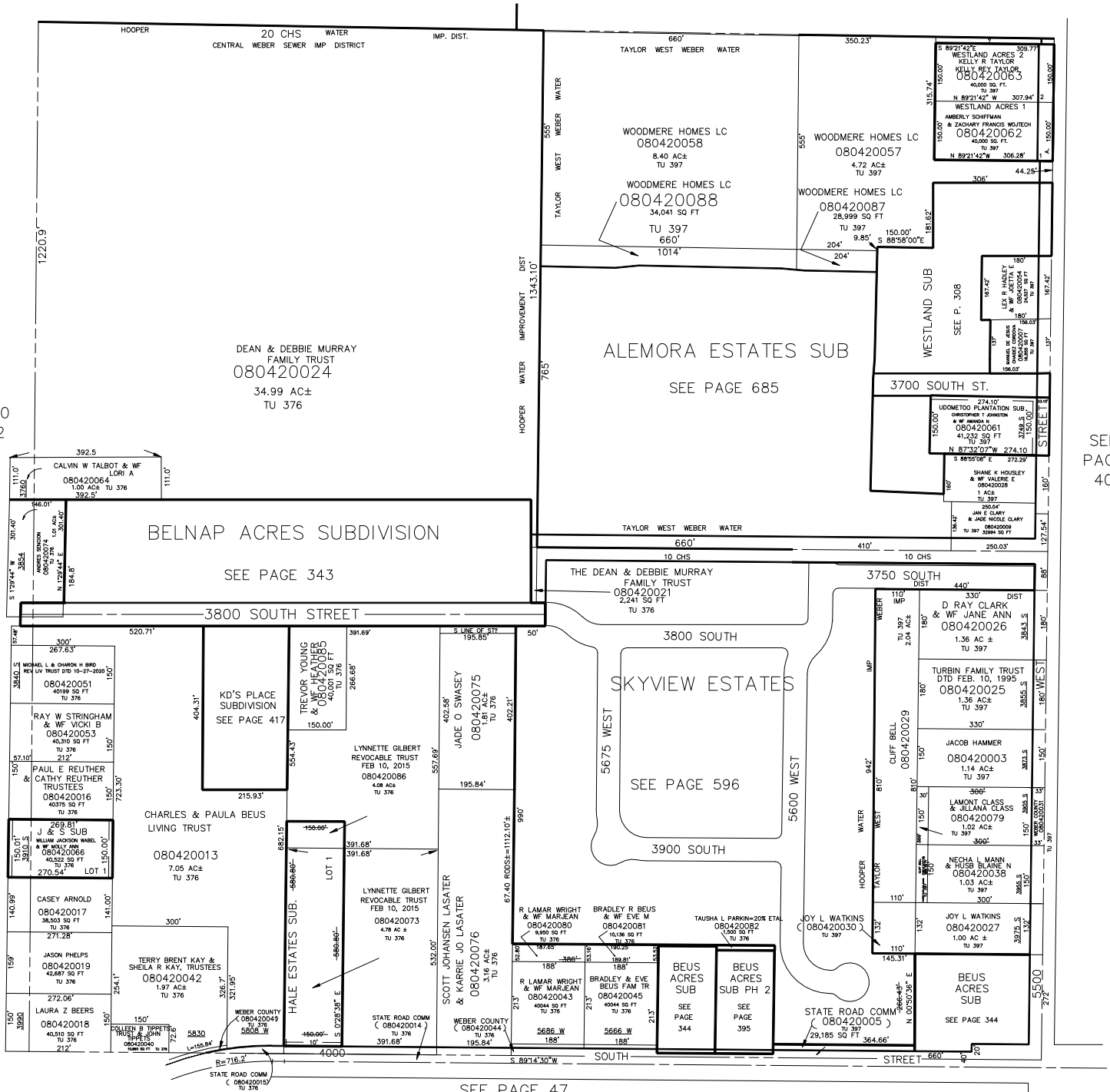
IN HOOPER CITY

SCALE 1"=200'

SEE PAGE 39

SEE
BOOK 10
PAGE 2

SEE
PAGE
40



SEE PAGE 47
FOR TAX PURPOSES ONLY