

PART OF N.E. 1/4 SEC. 7, T.5N., R.2W., S.L.B. & M.

44

LUCIN SUBDIVISION

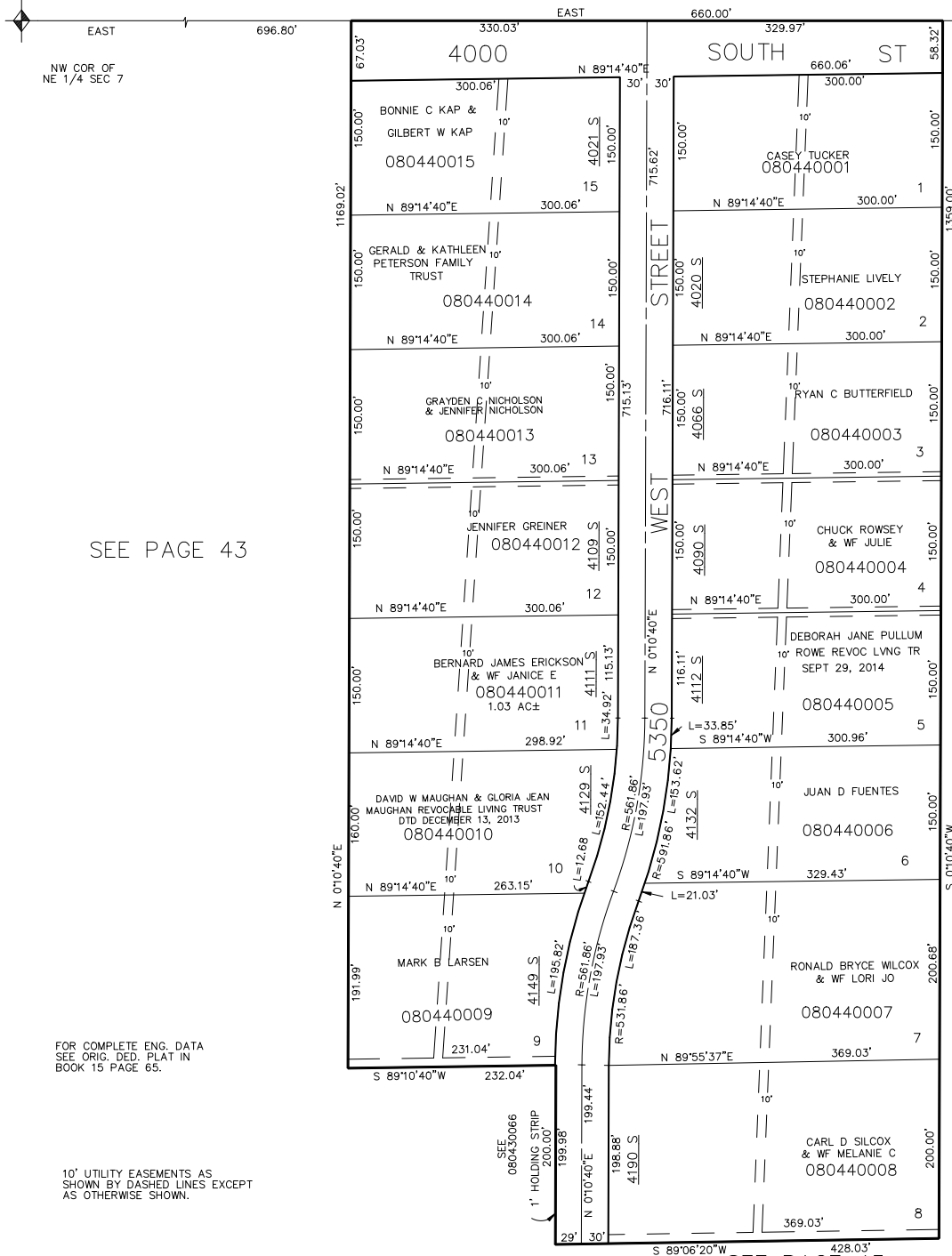
TAXING UNIT: 397

IN HOOPER CITY

SCALE 1"=100'

SEE PAGE 40

NE COR SEC 7



SEE PAGE 43

SEE PAGE 147

SEE PAGE 43

FOR TAX PURPOSES ONLY

S.H.L. 6-87