

SW 1/4
SECTION 7, T5N, R2W, S.L.B. & M.

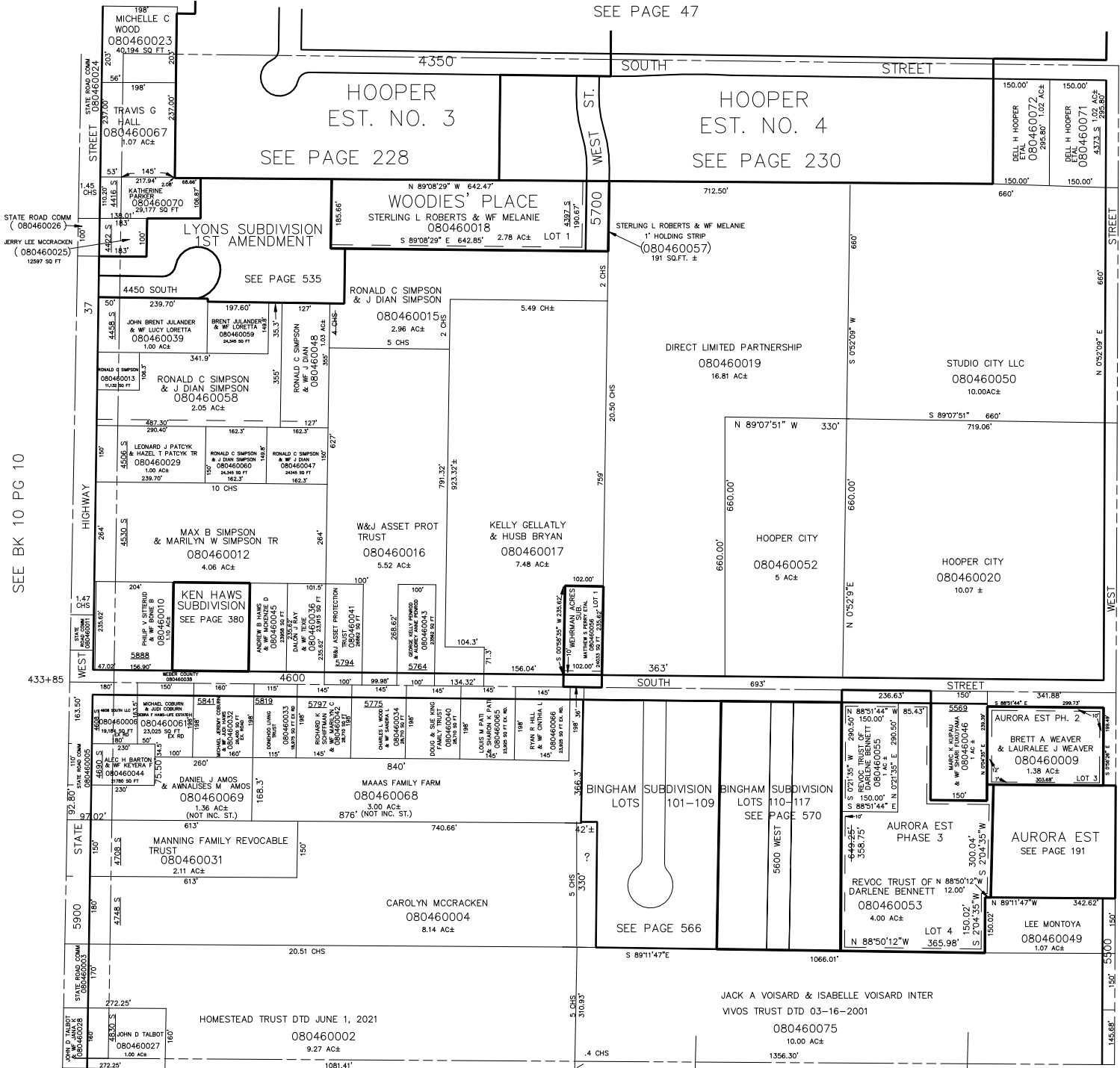
IN HOOPER CITY
SCALE 1"=200'

TAXING UNIT: 376

SEE PAGE 47

HOOPER
EST. NO. 3
SEE PAGE 228

HOOPER
EST. NO. 4
SEE PAGE 230



SEE BK 10 PG 10

SEE PAGE 45

SEE BK 9 PG 77

FOR TAX PURPOSES ONLY