

S.E. 1/4  
SECTION 9, T.5N., R. 2W., S.L.B. & M.

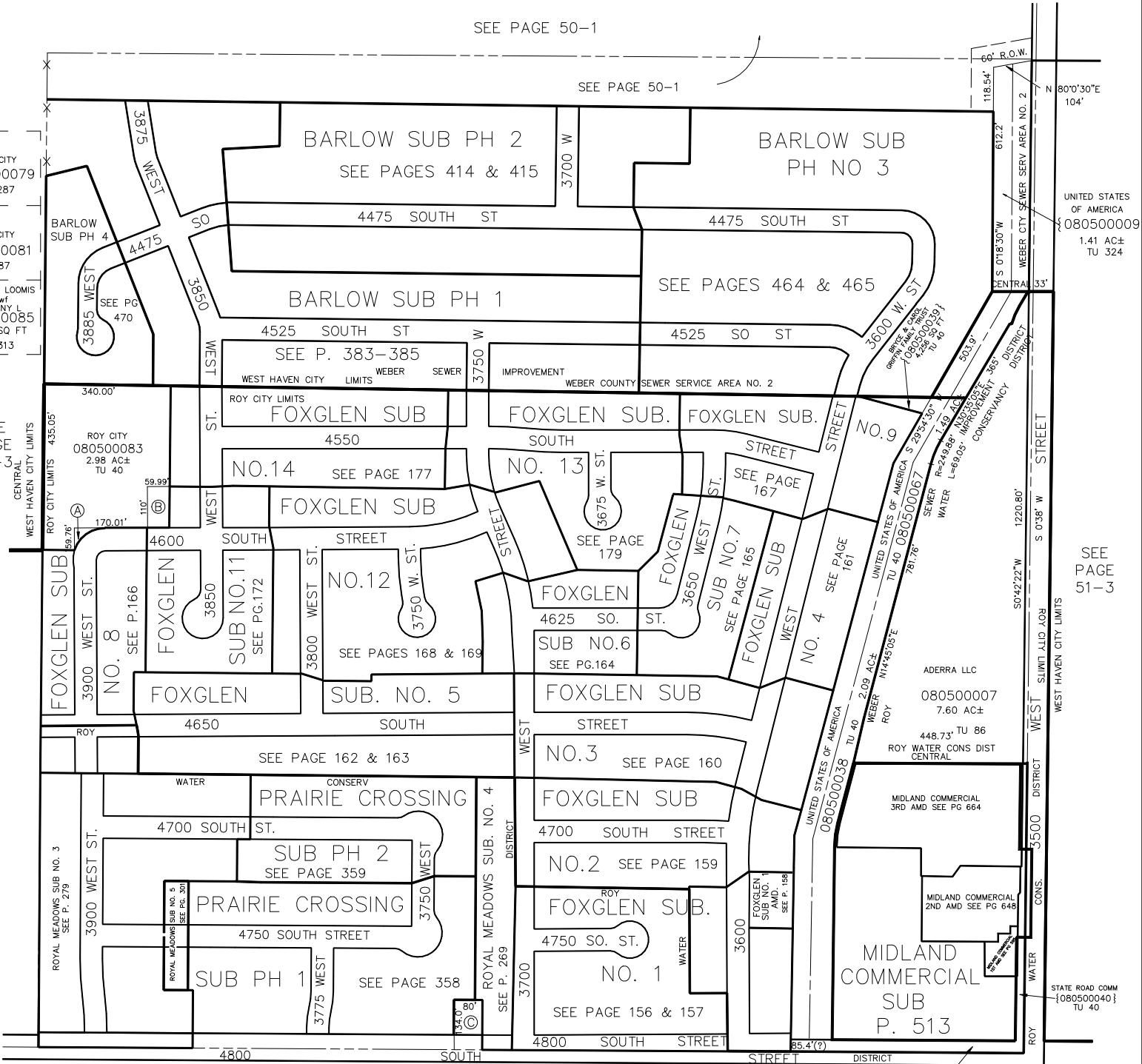
IN WEST HAVEN CITY & ROY CITY

TAXING UNIT: 40, 86, 324, 313, 391

SCALE 1" = 200'

SEE PAGE 50-1

SEE PAGE 50-1



SEE BOOK 9, PAGE 72

\*FOR TAX PURPOSES ONLY\*

WEBER COUNTY  
{080500054}  
TU 40

L.D.F. 9-92