

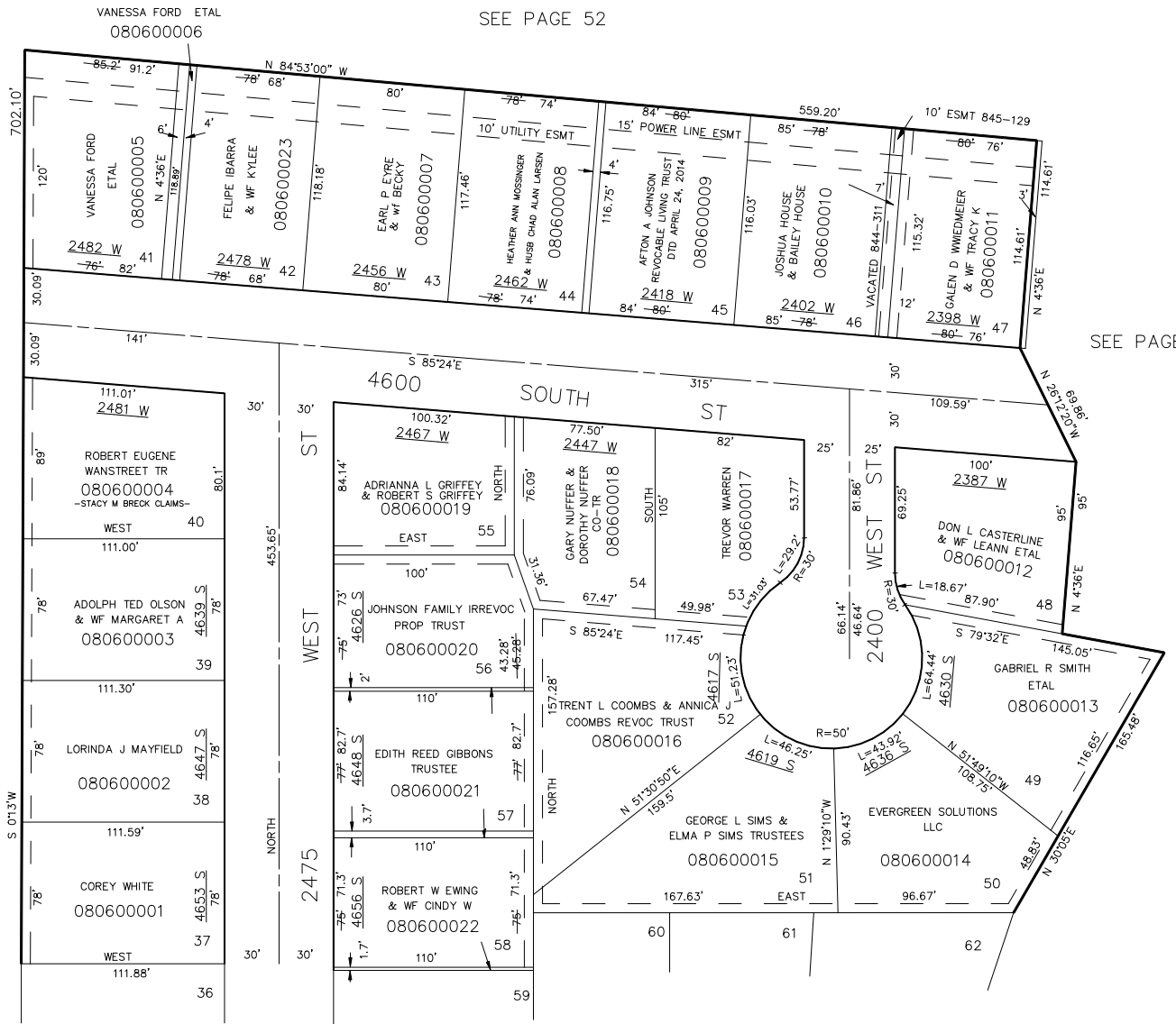
PART OF THE S.W. 1/4, SEC. 11, T.5N., R.2W., S.L.B. & M.
 RIDGEWOOD ESTATES SUBDIVISION NO. 2

60

LOTS 37-58

IN ROY CITY
 SCALE 1" = 50'

TAXING UNIT: 41



5' UTILITY & DRAINAGE EASEMENTS
 EACH SIDE OF PROPERTY LINES AS
 INDICATED BY DASHED LINES.
 EXCEPT AS OTHERWISE SHOWN.

SEE PAGE 59

FOR COMPLETE ENG. DATA
 SEE ORIG. DED. PLAT IN
 BOOK 13 PAGE 45.

FOR TAX PURPOSES ONLY

S.H.L. 3-87