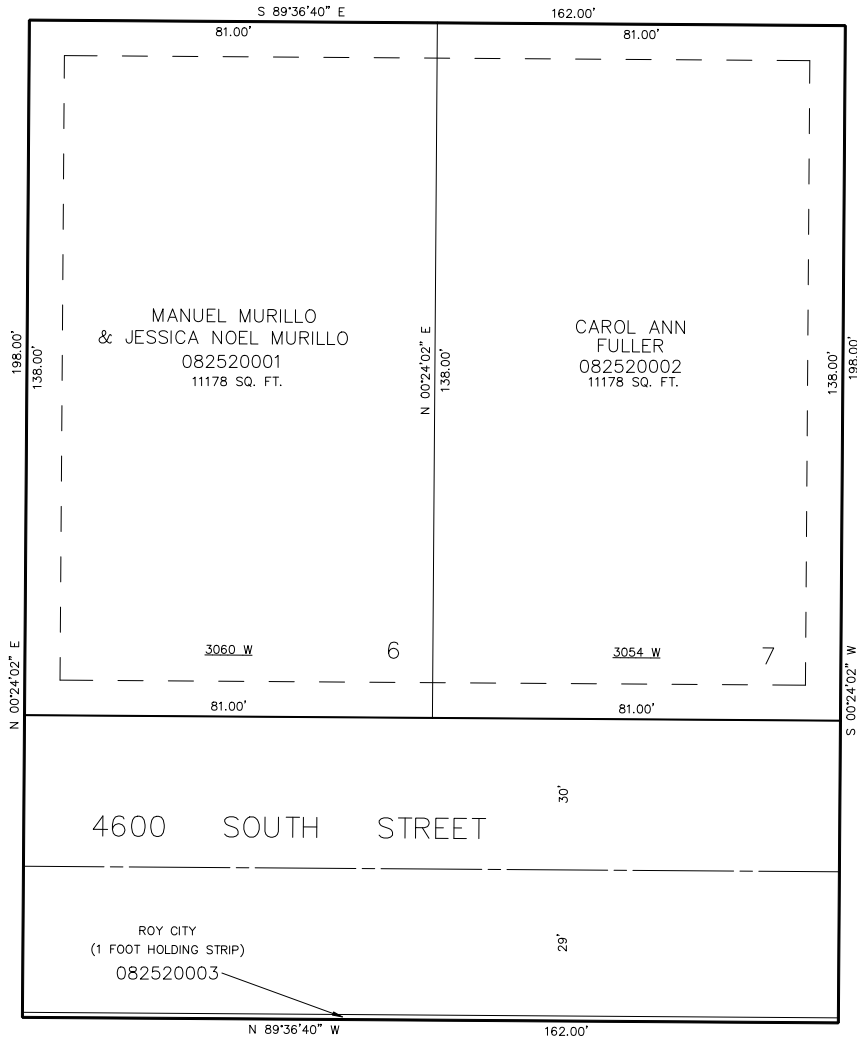


PART OF THE SE.1/4, OF SEC. 10, T.5N., R.2W., S.L.B. & M.
WALKER ESTATES – PHASE TWO

TAXING UNIT: 41
IN ROY CITY
SCALE 1" = 20'

SEE PAGE 51-2



SEE PAGE 201

SEE PAGE 51-2

7' UTILITY & DRAINAGE EASEMENTS EACH
SIDE OF PROPERTY LINES AS INDICATED
BY DASHED LINES EXCEPT AS OTHERWISE
SHOWN.

SEE PAGE 51-2

FOR COMPLETE ENG DATA SEE
ORIGINAL DEDICATION PLAT IN
BOOK 40, PAGE 54 OF RECORDS.