

PART OF THE N.W. 1/4, OF SECTION 1, T.5N., R.2W., S.L.B. & M.
KAPP INDUSTRIAL PARK SUBDIVISION, PHASE 6

IN OGDEN CITY
 SCALE 1" = 40'

TAXING UNIT: 25

SEE PAGE 5

SEE PAGE 340

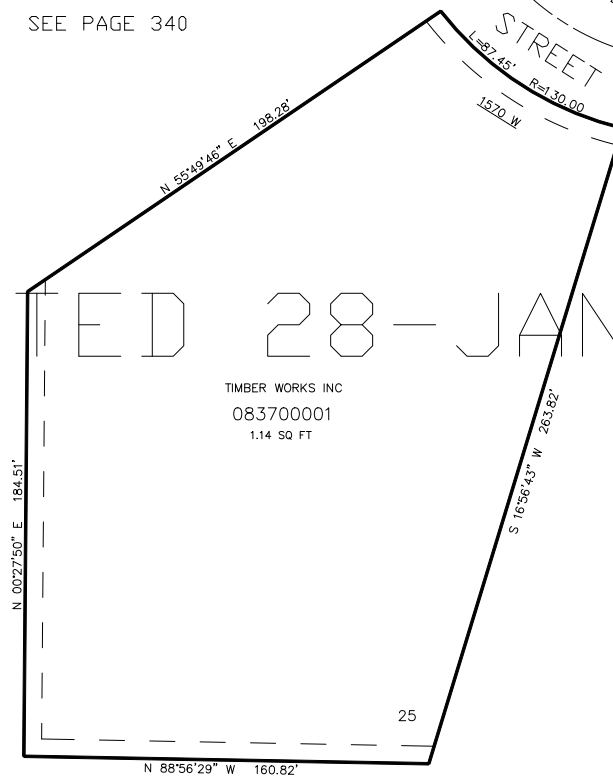
3425 SOUTH
 STREET

OMITTED 28-JAN-2008

TIMBER WORKS INC
 083700001
 1.14 SQ FT

SEE PAGE 5

SEE PAGE 5



SEE PAGE 5

7' UTILITY & DRAINAGE EASEMENTS EACH
 SIDE OF PROPERTY LINES AS INDICATED
 BY DASHED LINES EXCEPT AS OTHERWISE
 SHOWN.

FOR COMPLETE ENG DATA SEE
 ORIGINAL DEDICATION PLAT IN
 BOOK 53, PAGE 66 OF RECORDS.