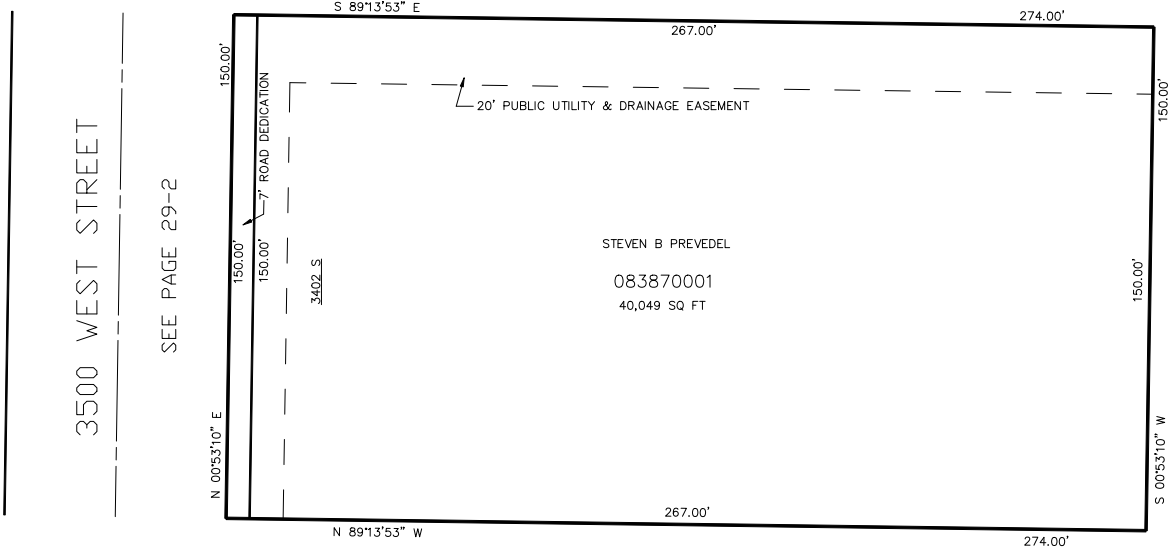


PART OF THE NW.1/4, OF SECTION 3, T.5N., R.2W., S.L.B. & M.  
**PREVEDEL ACRES SUBDIVISION**

IN WEST HAVEN CITY  
SCALE 1" = 30'

TAXING UNIT: 519

SEE PAGE 29-2



SEE PAGE 29-2

SEE PAGE 29-2

10' UTILITY & DRAINAGE EASEMENTS EACH  
SIDE OF PROPERTY LINES AS INDICATED  
BY DASHED LINES EXCEPT AS OTHERWISE  
SHOWN.

FOR COMPLETE ENG DATA SEE  
ORIGINAL DEDICATION PLAT IN  
BOOK 55, PAGE 64 OF RECORDS.