

PART OF THE NW.1/4, OF SECTION 4, T.5N., R.2W., S.L.B. & M.

FAVERO ESTATES

IN WEBER COUNTY

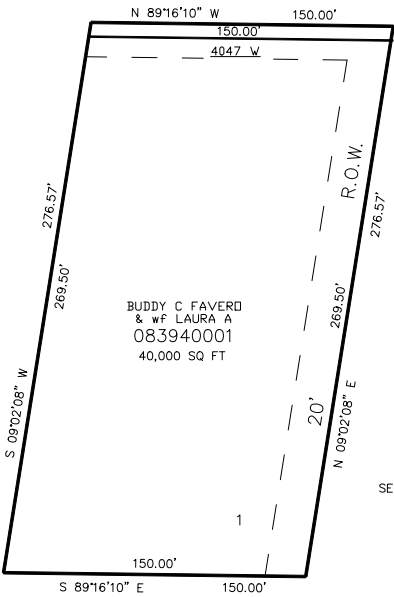
TAXING UNIT: 207

SCALE 1" = 50'

SEE PAGE 35

3300 SOUTH ST.

SEE PAGE 35



SEE PAGE 35

SEE PAGE 35

10' UTILITY & DRAINAGE EASEMENTS EACH  
SIDE OF PROPERTY LINES AS INDICATED  
BY DASHED LINES EXCEPT AS OTHERWISE  
SHOWN.

FOR COMPLETE ENG DATA SEE  
ORIGINAL DEDICATION PLAT IN  
BOOK 56, PAGE 18 OF RECORDS.