

PART OF THE SE.1/4, OF SECTION 7, T.5N., R.2W., S.L.B. & M.

PENMANS ACRES

IN HOOPER CITY

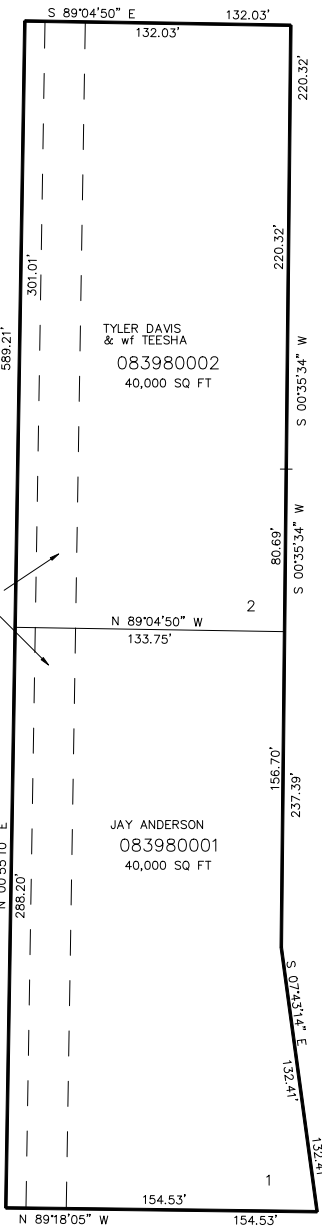
TAXING UNIT: 376

SCALE 1" = 50'

SEE PAGE 45

SEE PAGE 45

EXISTING 20' GRAVEL PRIVATE RIGHT-OF-WAY



FOR COMPLETE ENG DATA SEE  
ORIGINAL DEDICATION PLAT IN  
BOOK 57, PAGE 09 OF RECORDS.

10' UTILITY & DRAINAGE EASEMENTS EACH  
SIDE OF PROPERTY LINES AS INDICATED  
BY DASHED LINES EXCEPT AS OTHERWISE  
SHOWN.

4600 SOUTH STREET

SEE PAGE 45

\*FOR TAX PURPOSES ONLY\*