

PART OF THE SE.1/4, OF SECTION 11, T.5N., R.2W., S.L.B. & M.
AMENDED PLAT OF HILLS OF HOMES

426

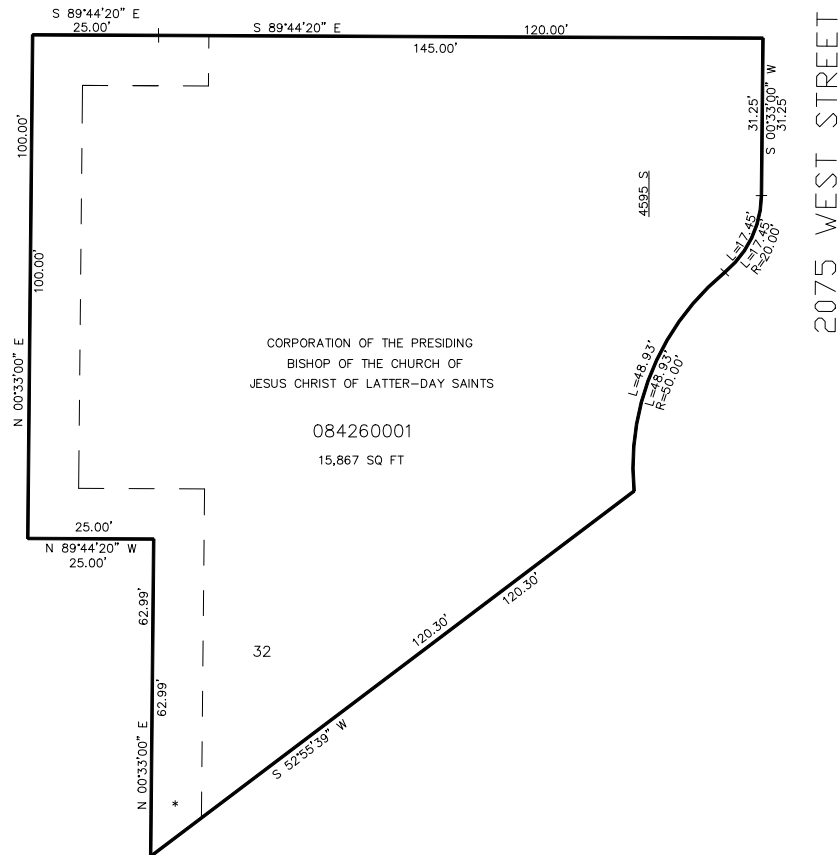
TAXING UNIT: 41

IN ROY CITY
SCALE 1" = 20'

SEE PAGE 78

55 FOOT PRIVATE STREET

SEE PAGE 73



SEE PAGE 78

SEE PAGE 78

* FOR FENCELINE INFORMATION
SEE DED PLAT (BK 59 PG 50)

FOR COMPLETE ENG DATA SEE
ORIGINAL DEDICATION PLAT IN
BOOK 59, PAGE 50 OF RECORDS.

10' UTILITY & DRAINAGE EASEMENTS EACH
SIDE OF PROPERTY LINES AS INDICATED
BY DASHED LINES EXCEPT AS OTHERWISE
SHOWN.