

PART OF THE SW.1/4, OF SECTION 8, T.5N., R.2W., S.L.B. & M.
STONEFIELD ESTATES SUBDIVISION PHASE 2

IN WEST HAVEN CITY

SCALE 1" = 100'

TAXING UNIT: 278

SEE PAGE 48

S 89°14'24" E
506.09'

456.08'

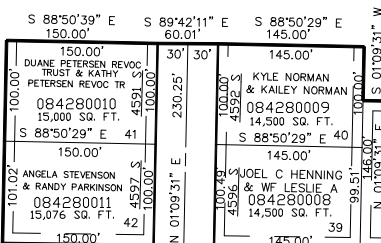
*OPEN SPACE
PARCEL A

WEST HAVEN CITY
084280020
3.38 AC±

4700 WEST

SEE PAGE 48

SEE PAGE 48



STONEFIELD
EST SUB
PH 2 LOT
43 1ST AMD

SEE PAGE 490

SEE BELOW

4875 SOUTH

4600 SOUTH

N 89°13'50" W

S 89°12'20" E

2668.74

STONEFIELD ESTATES SUB PH 2 LOT 43 1ST AMD
SEE PAGE 490

SEE ABOVE LEFT

N 89°13'50" W

2668.74

SEE PAGE 48

* FOR MORE INFORMATION ABOUT
OPEN SPACE SEE DEDICATION PLAT

FOR COMPLETE ENG DATA SEE
ORIGINAL DEDICATION PLAT IN
BOOK 59, PAGE 65 OF RECORDS.

10' UTILITY & DRAINAGE EASEMENTS EACH
SIDE OF PROPERTY LINES AS INDICATED
BY DASHED LINES EXCEPT AS OTHERWISE
SHOWN.

FOR TAX PURPOSES ONLY

LLF 07-04