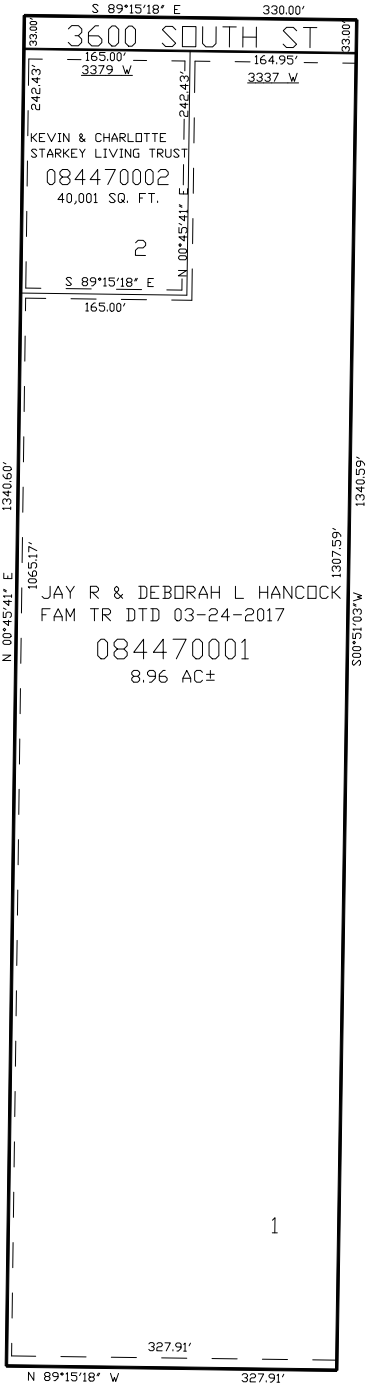


PART OF THE SW.1/4, OF SECTION 3, T.5N., R.2W., S.L.B. & M.
DAYLONG RANCH SUBDIVISION AMENDED

TAXING UNIT: 292

IN WEST HAVEN CITY
SCALE 1" = 100'

SEE PAGE 34



SEE PAGE 34

SEE PAGE 34

10' UTILITY EASEMENTS (AS INDICATED BY DASHED LINES)
ARE ALONG THE FRONT PROPERTY LINES AND REAR LOT LINES.
5' UTILITY EASEMENTS (AS INDICATED BY DASHED LINES) ON
ALL SIDE LOTS OF INTERIOR LOTS AS INDICATED ON THE PLAT

FOR COMPLETE ENG DATA SEE
ORIGINAL DEDICATION PLAT IN
BOOK62, PAGE 21 OF RECORDS.

SEE PAGE 34

FOR TAX PURPOSES ONLY