

PART OF THE NW.1/4, OF SECTION 12, T.5N., R.2W., S.L.B. & M.

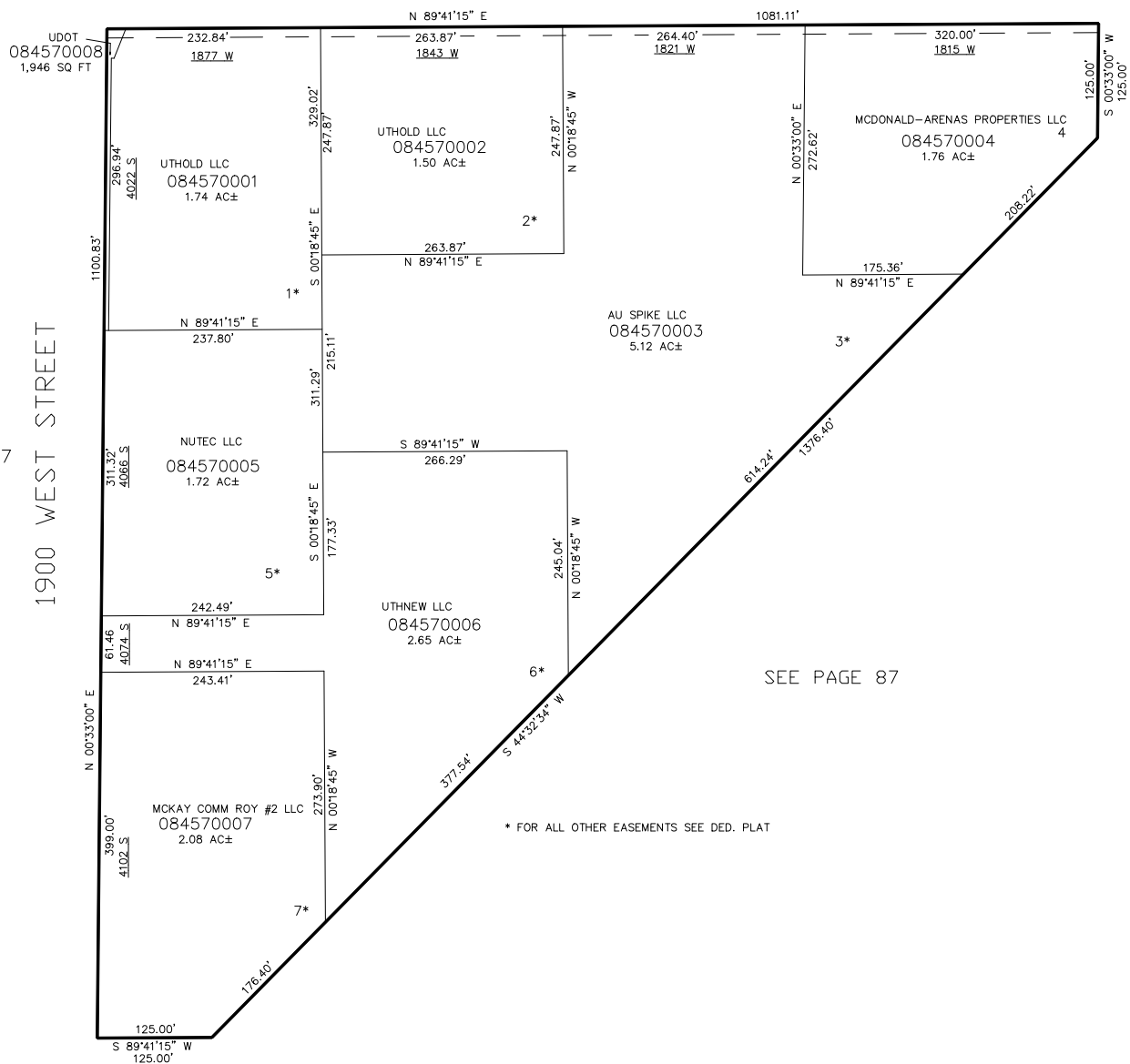
GOLDEN SPIKE TECHNOLOGY PARK

IN ROY CITY

SCALE 1" = 100'

TAXING UNIT: 186

4000 SOUTH STREET



FOR COMPLETE ENG DATA SEE
ORIGINAL DEDICATION PLAT IN
BOOK 62, PAGE 88 OF RECORDS.

10' UTILITY & DRAINAGE EASEMENTS EACH
SIDE OF PROPERTY LINES AS INDICATED
BY DASHED LINES EXCEPT AS OTHERWISE
SHOWN.

* FOR ALL OTHER EASEMENTS SEE DED. PLAT

SEE PAGE 87

SEE PAGE 87

1900 WEST STREET

UDOT
084570008
1,946 SQ FT