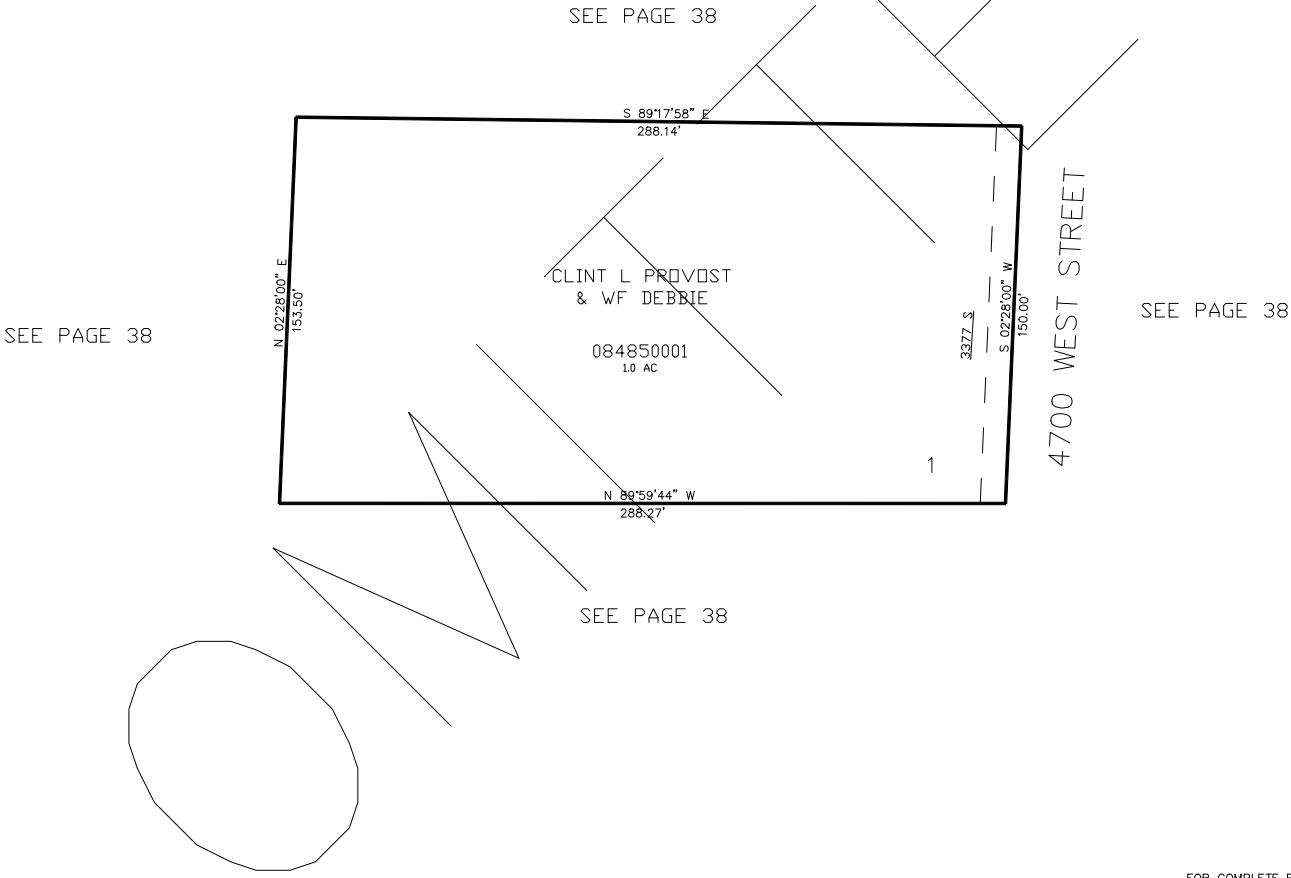


PART OF THE NW 1/4 OF SECTION 5, T.5N., R.2W, S.L.B. & M.
MAXINE MEADOWS SUBDIVISION

IN WEBER COUNTY
SCALE 1" = 40'

TAXING UNIT: 291



10' UTILITY & DRAINAGE EASEMENTS EACH
SIDE OF PROPERTY LINES AS INDICATED
BY DASHED LINES EXCEPT AS OTHERWISE
SHOWN.

FOR COMPLETE ENG DATA SEE
ORIGINAL DEDICATION PLAT IN
BOOK 66, PAGE 39 OF RECORDS.