

PART OF THE NW.1/4, OF SECTION 2, T.5N., R.2W., S.L.B. & M.
GLOVER ESTATES PUD SUBDIVISION PH 2 1ST AMENDMENT

IN WEST HAVEN CITY

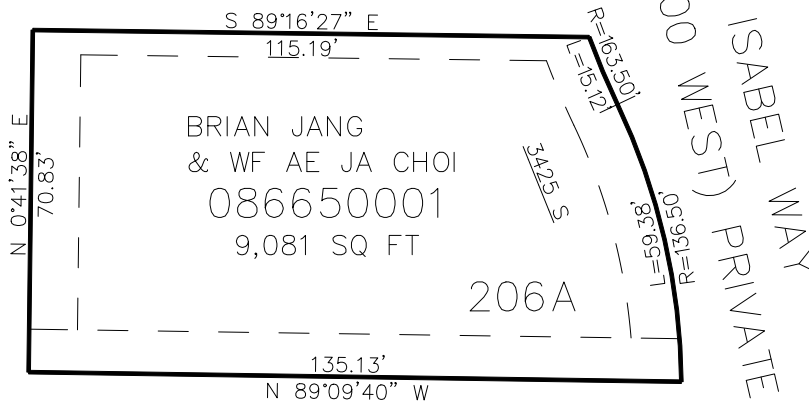
TAXING UNIT: 323

SCALE 1" = 20'

SEE PAGE 644

SEE PAGE 644

SEE PAGE 644



SEE PAGE 644

10' UTILITY & DRAINAGE EASEMENTS EACH
SIDE OF PROPERTY LINES AS INDICATED
BY DASHED LINES EXCEPT AS OTHERWISE
SHOWN.

FOR COMPLETE ENC DATA SEE
ORIGINAL DEDICATION PLAT IN
BOOK 90, PAGE 27 OF RECORDS.