

PART OF THE N.E. 1/4, OF SEC. 14, T.5N., R.2W., S.L.B. & M.
MAPLEWOOD ESTATES SUBDIVISION UNIT NO. 3

IN ROY CITY

TAXING UNIT: 41

SCALE 1" = 80'

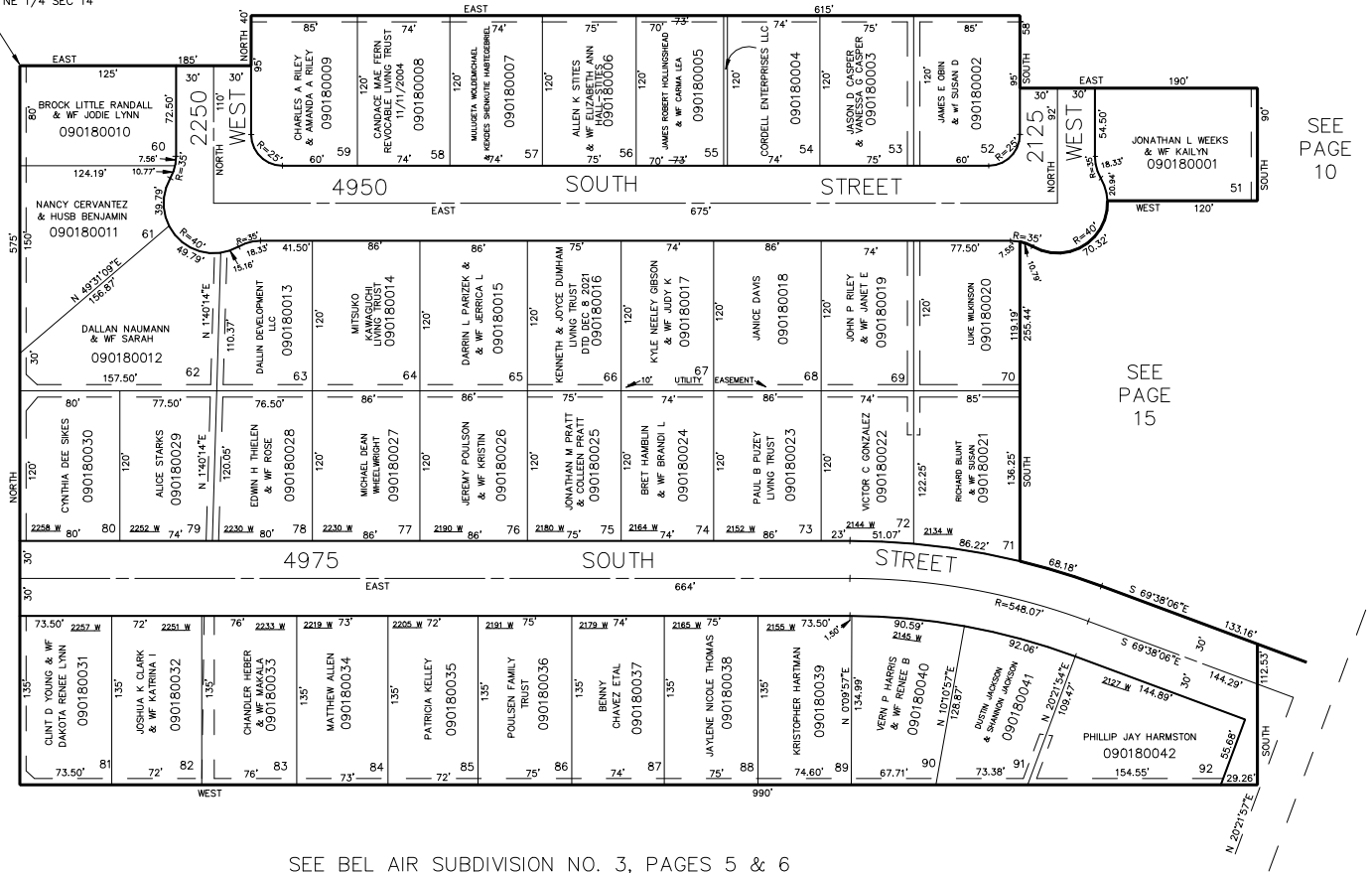
SEE MAPLEWOOD ESTATES UNIT NO. 2, PAGE 17

EAST 330' AND SOUTH 745'
FROM NW COR OF NE 1/4 SEC 14

SEE
PAGE
19

SEE
PAGE
10

SEE
PAGE
15



SEE BEL AIR SUBDIVISION NO. 3, PAGES 5 & 6

5' UTILITY & DRAINAGE EASEMENTS EACH
SIDE OF PROPERTY LINES AS INDICATED
BY DASHED LINES EXCEPT AS OTHERWISE
SHOWN.

FOR COMPLETE ENG DATA SEE
ORIGINAL DEDICATION PLAT IN
BOOK 12, PAGE 12 OF RECORDS.

FOR TAX PURPOSES ONLY