

PART NW 1/4 SEC. 14, T.5N., R.2W., S.L.B. & M.
HARVEY'S REDWOOD ESTATES NO.1
 LOTS 1-6, 23-33 & 36-42

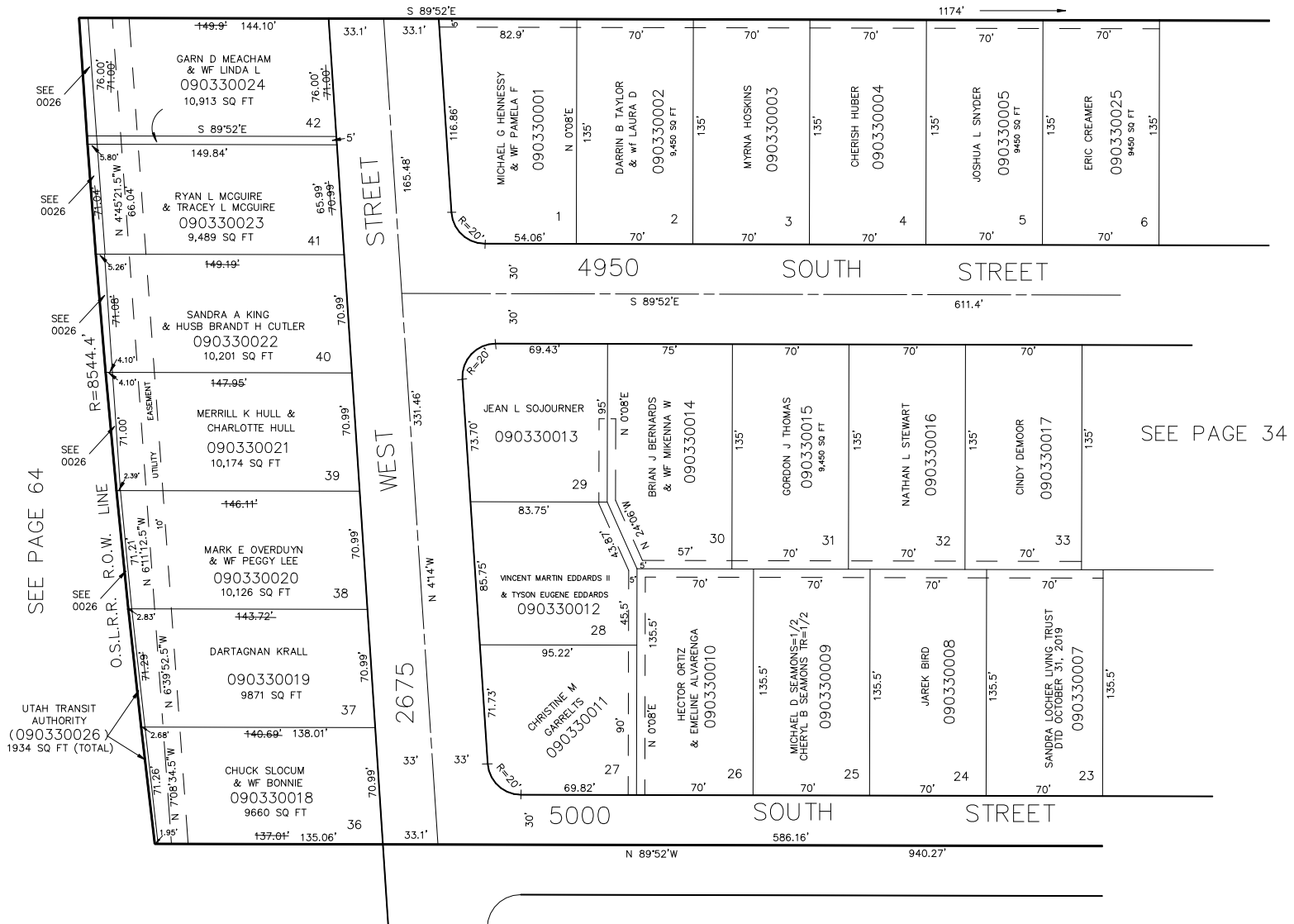
33

IN ROY CITY

TAXING UNIT: 41

SCALE 1" = 50'

SEE PAGE 32



SEE PAGE 36

10' UTILITY EASEMENTS AS INDICATED BY DASHED LINES. (5' EACH SIDE OF PROPERTY LINE).

FOR TAX PURPOSES ONLY

FOR COMPLETE ENG. DATA SEE ORIG. DED. PLAT IN BOOK 12 PAGE 79.