

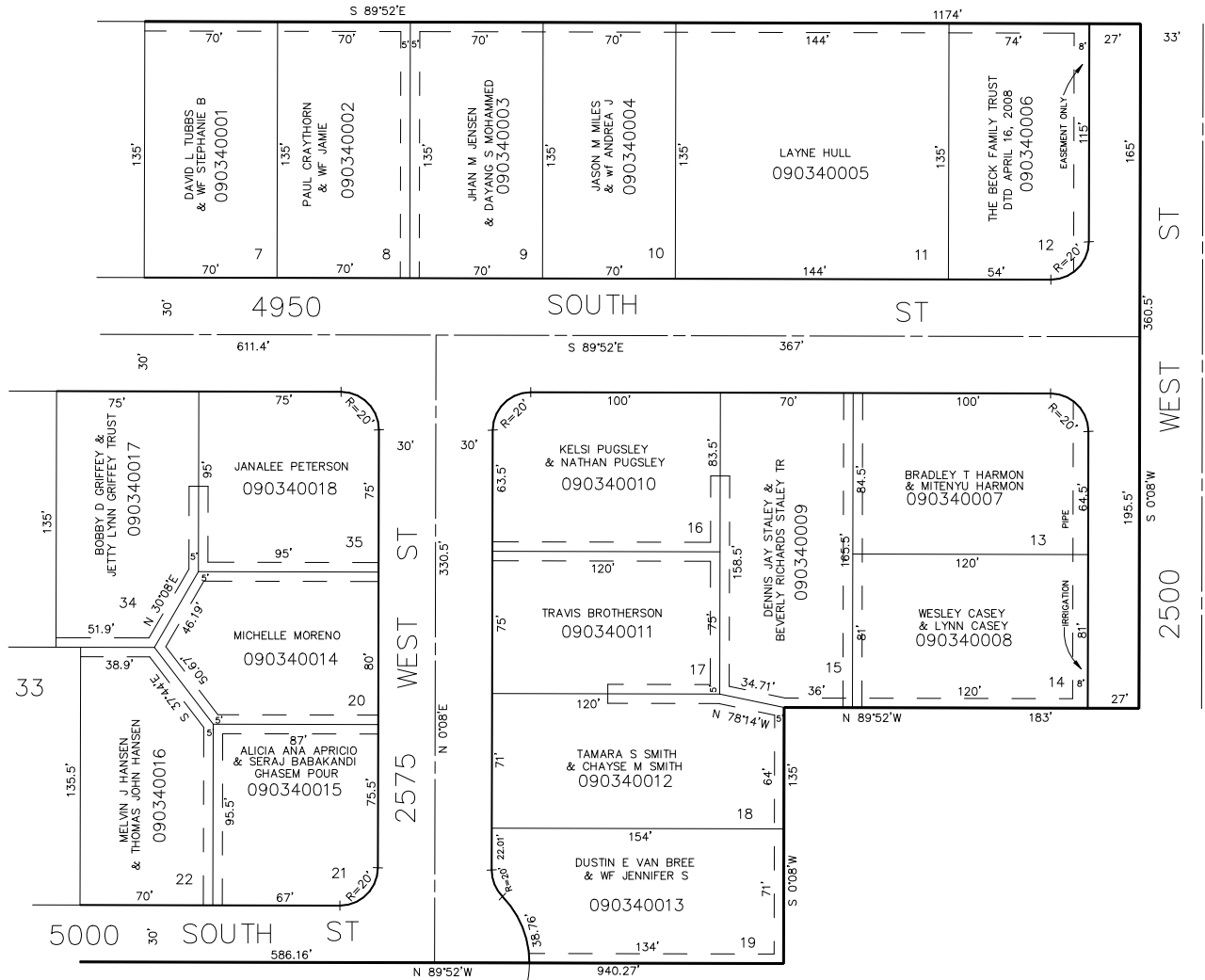
PART NW 1/4 SEC. 14, T.5N., R.2W., S.L.B. & M.
HARVEY'S REDWOOD ESTATES NO.1
LOTS 7-22 & 34-35

TAXING UNIT: 41

IN ROY CITY

SCALE 1" = 50'

SEE PAGE 31



SEE PAGE 33

SEE PAGE 36

FOR TAX PURPOSES ONLY

SEE PAGE 22