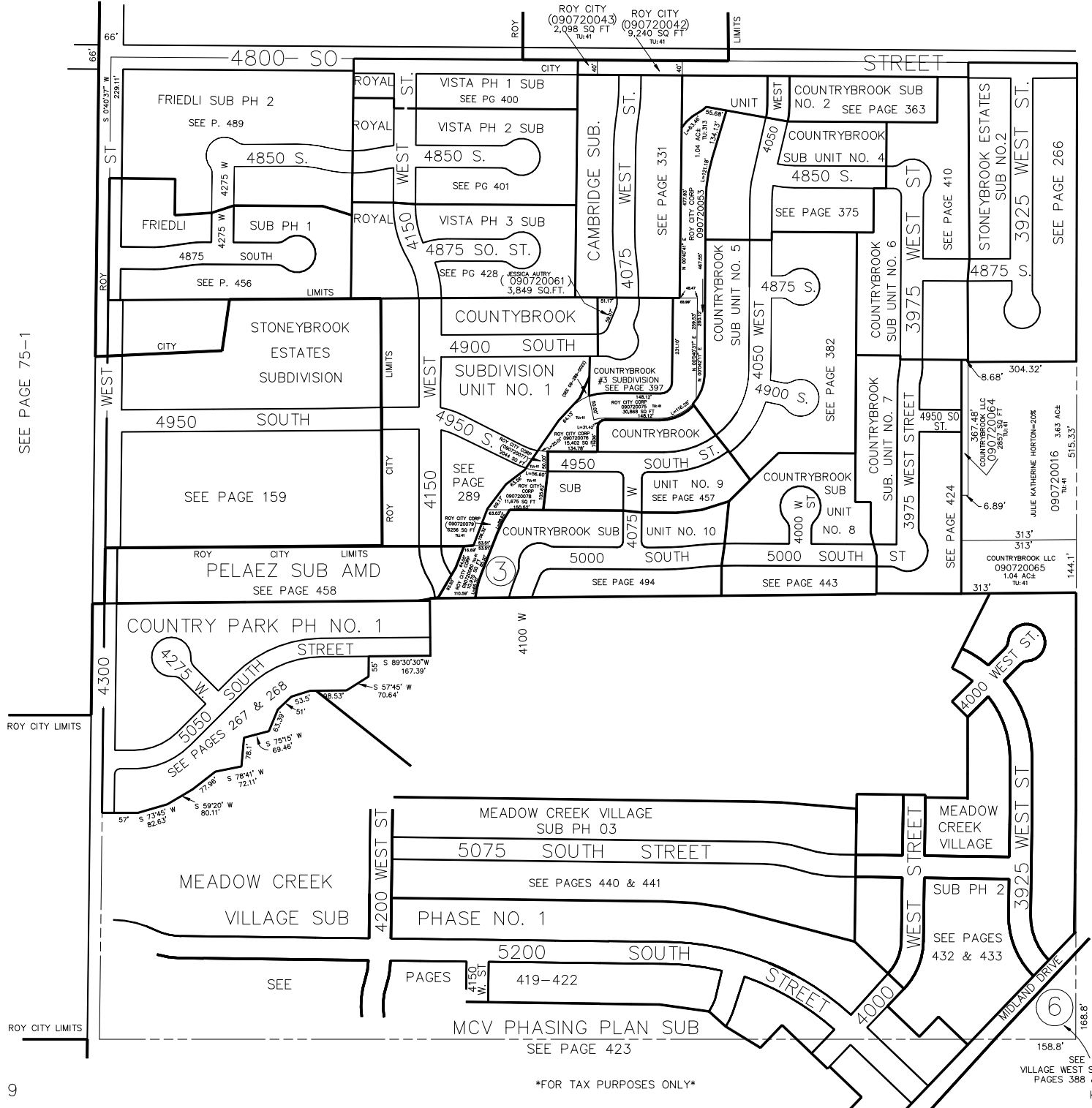


NW 1/4
SECTION 16, T.5N., R.2W., S.L.B. & M.

IN ROY CITY & WEBER COUNTY

TAXING UNIT: 41, 213

SCALE 1" = 200'



FOR TAX PURPOSES ONLY

SEE VILLAGE WEST SUB PH 2
PAGES 388 & 389
KST 2-93

SEE PAGE 75-1