

PART OF THE N.W. 1/4, OF SEC. 19, T.5N., R.2W., AND N.E. 1/4 OF SEC. 24 T.5N., R. 3W., S.L.B. & M.

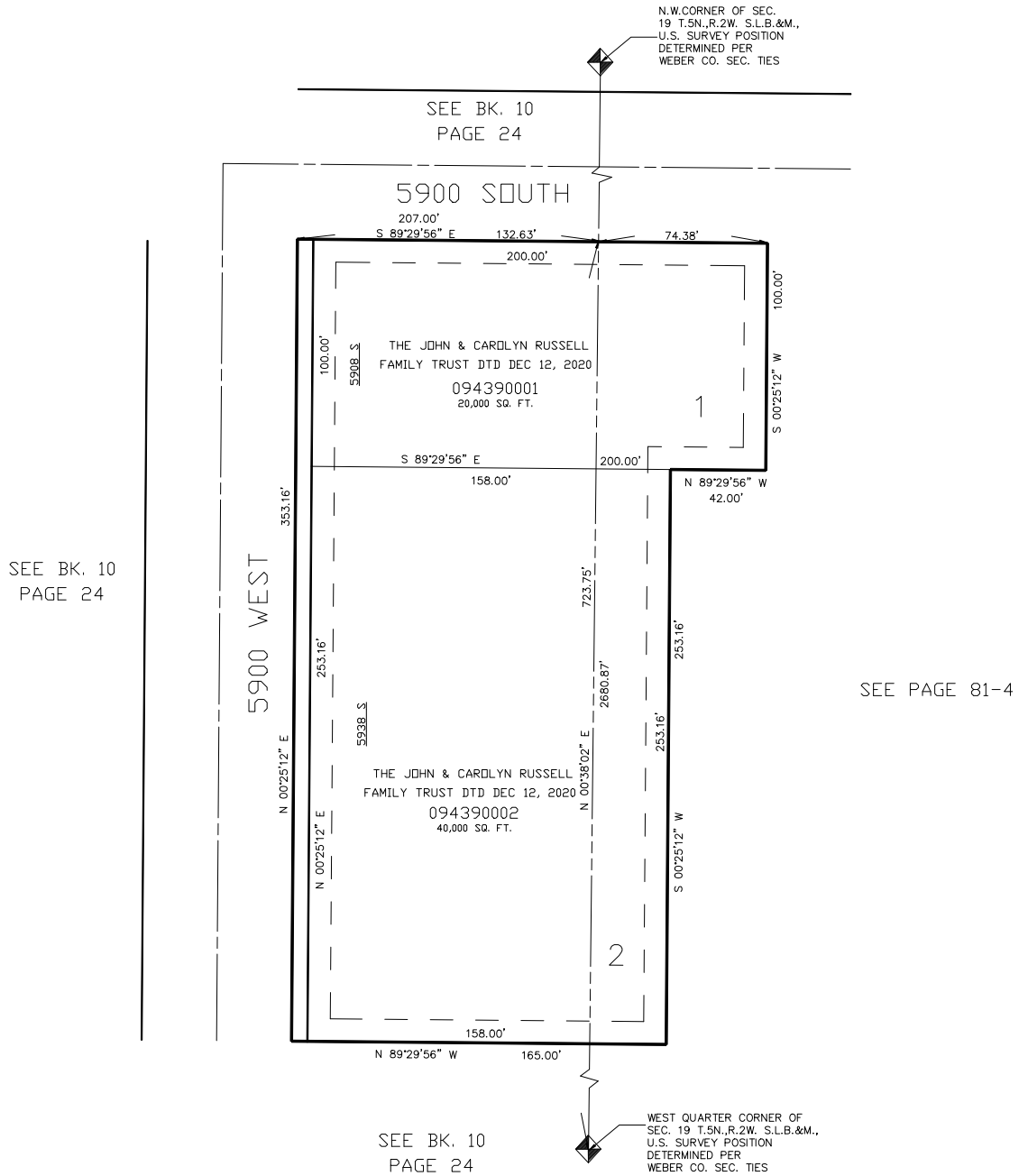
439

RUSSELL SUBDIVISION

IN HOOPER CITY

TAXING UNIT: 376

SCALE 1" = 40'



10' UTILITY & DRAINAGE EASEMENTS EACH SIDE OF PROPERTY LINES AS INDICATED BY DASHED LINES EXCEPT AS OTHERWISE SHOWN.

FOR COMPLETE ENG DATA SEE ORIGINAL DEDICATION PLAT IN BOOK 48, PAGE 9 OF RECORDS.