

PART OF THE NW 1/4, OF SECTION 24, T.5N., R.2W., S.L.B. & M.

FIVE STAR PLAZA

IN ROY CITY

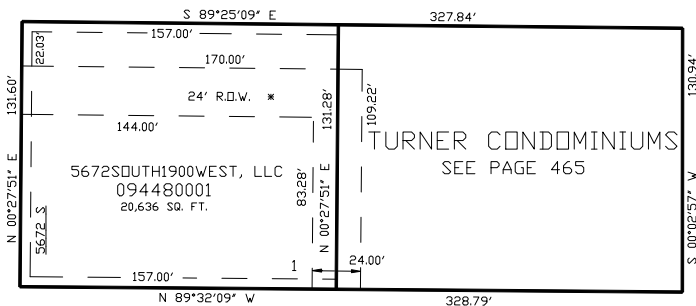
SCALE 1" = 50'

TAXING UNIT: 383

SEE PAGE 141

SEE PAGE 141

1900 WEST ST



SEE PAGE 141

SEE PAGE 141

* SEE R.O.W. AFFIDAVIT
#1666940 8-OCT-1999

FOR COMPLETE ENG DATA SEE
ORIGINAL DEDICATION PLAT IN
BOOK 49, PAGE 55 OF RECORDS.

5' UTILITY & DRAINAGE EASEMENTS EACH
SIDE OF PROPERTY LINES AS INDICATED
BY DASHED LINES EXCEPT AS OTHERWISE
SHOWN.

FOR TAX PURPOSES ONLY

KST 5-99