

PART OF THE SW.1\4, OF SECTION 18, T.5N., R.2W., S.L.B. & M.
ODENWALDER SUBDIVISION AMD.

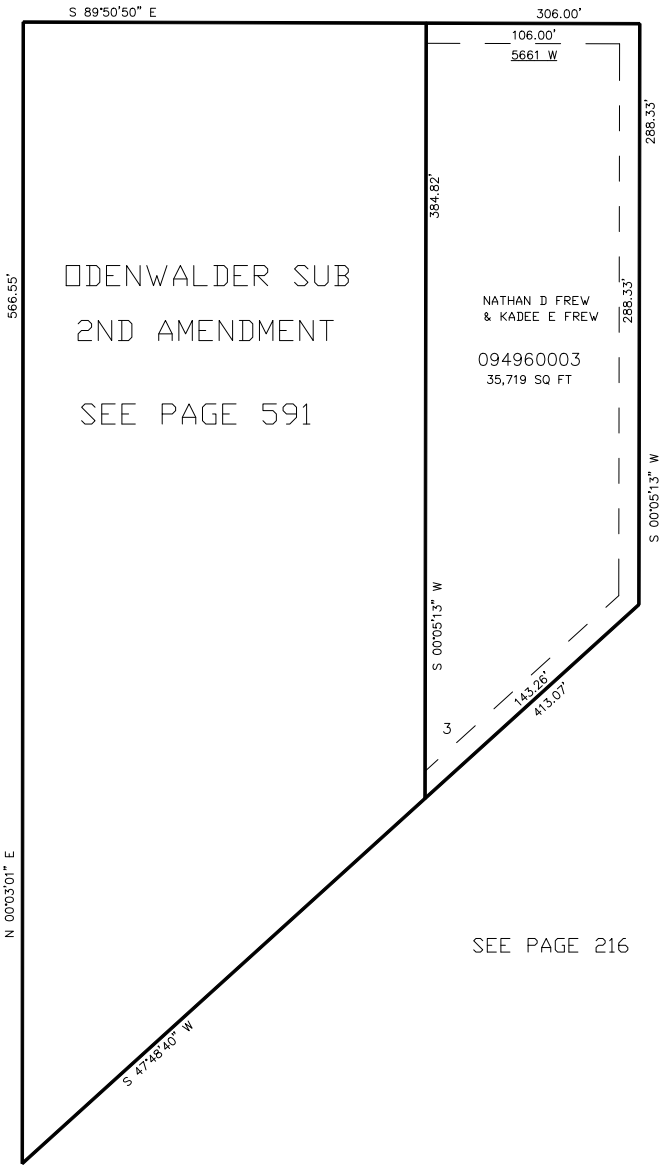
IN WEBER COUNTY
SCALE 1" = 50'

TAXING UNIT: 376

SEE PAGE 79

5300 SOUTH STREET

SEE PAGE 79



ODENWALDER SUB
2ND AMENDMENT
SEE PAGE 591

NATHAN D FREW
& KADEE E FREW
094960003
35,719 SQ FT

SEE PAGE 80

SEE PAGE 216

10' UTILITY & DRAINAGE EASEMENTS EACH
SIDE OF PROPERTY LINES AS INDICATED
BY DASHED LINES EXCEPT AS OTHERWISE
SHOWN.

FOR COMPLETE ENG DATA SEE
ORIGINAL DEDICATION PLAT IN
BOOK 54, PAGE 40 OF RECORDS.