

PART OF THE NW. 1/4, OF SECTION 23, T.5N., R.2W., S.L.B. & M.

RUSSELL ESTATES SUBDIVISION SECOND AMENDMENT

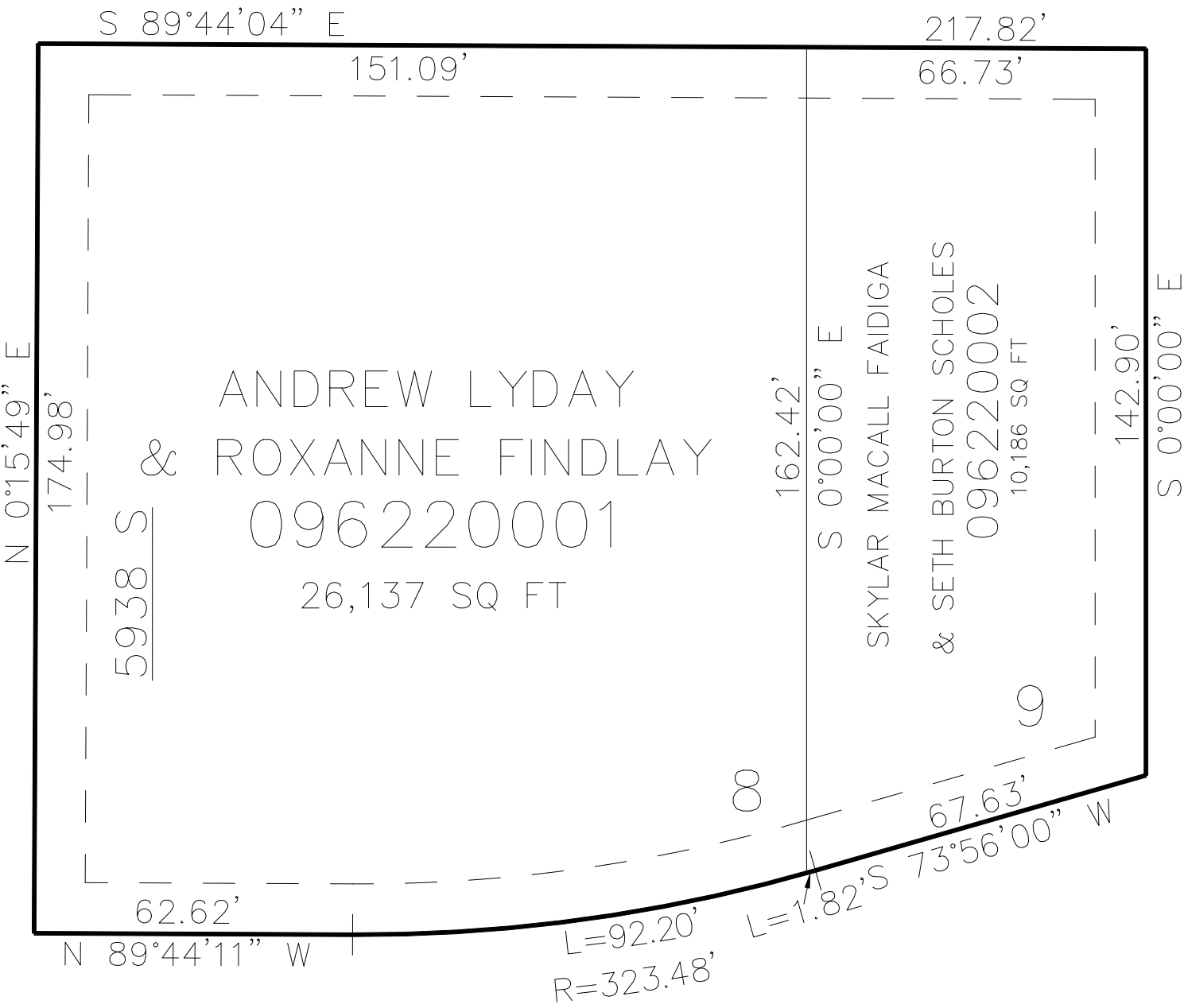
622

TAXING UNIT: 41

IN ROY CITY
SCALE 1" = 30'

SEE PAGE 123

2575 WEST



SEE PAGE 564

5950 SOUTH

10' UTILITY & DRAINAGE EASEMENTS EACH
SIDE OF PROPERTY LINES AS INDICATED
BY DASHED LINES EXCEPT AS OTHERWISE
SHOWN.

FOR COMPLETE ENG DATA SEE
ORIGINAL DEDICATION PLAT IN
BOOK 84, PAGE 46 OF RECORDS.