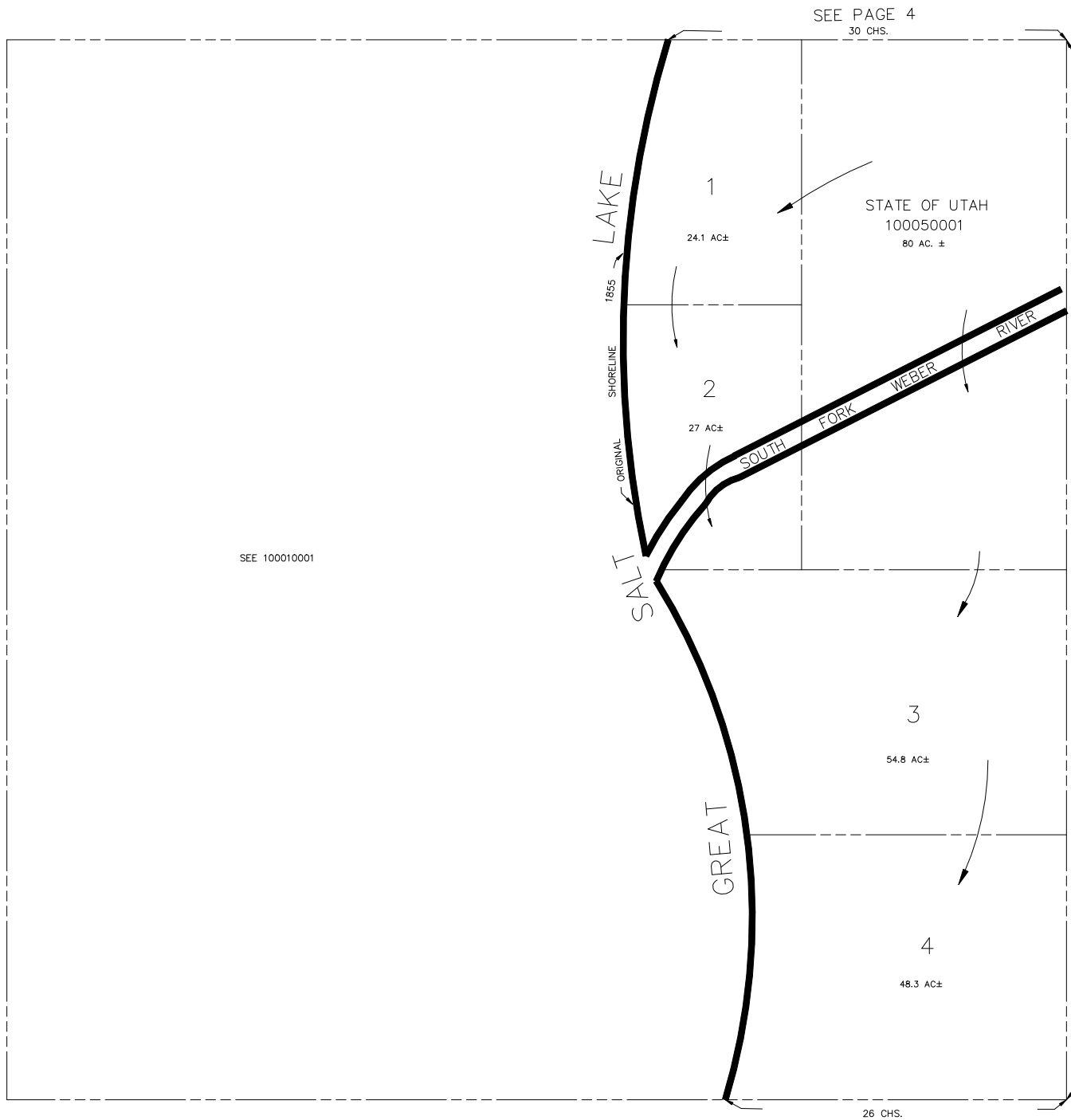


SECTION 10, T.5N., R.3W., S.L.B.& M.

IN HOOPER CITY

SCALE 1" = 400'

TAXING UNIT: 30



SEE PAGE 4
30 CHS.

STATE OF UTAH
100050001
80 AC. ±

1

24.1 AC±

1855

SHORELINE

ORIGINAL

2

27 AC±

SOUTH FORK WEBER RIVER

SEE 100010001

80 CHS.

SEE PAGE 6

3

54.8 AC±

GREAT

4

48.3 AC±

26 CHS.

SEE PAGE 20

FOR TAX PURPOSES ONLY