

N.W. 1/4
SECTION 1, T.6N., R.3W., S.L.B.& M.

TAXING UNIT: 531

IN WEBER COUNTY

SCALE 1" = 200"

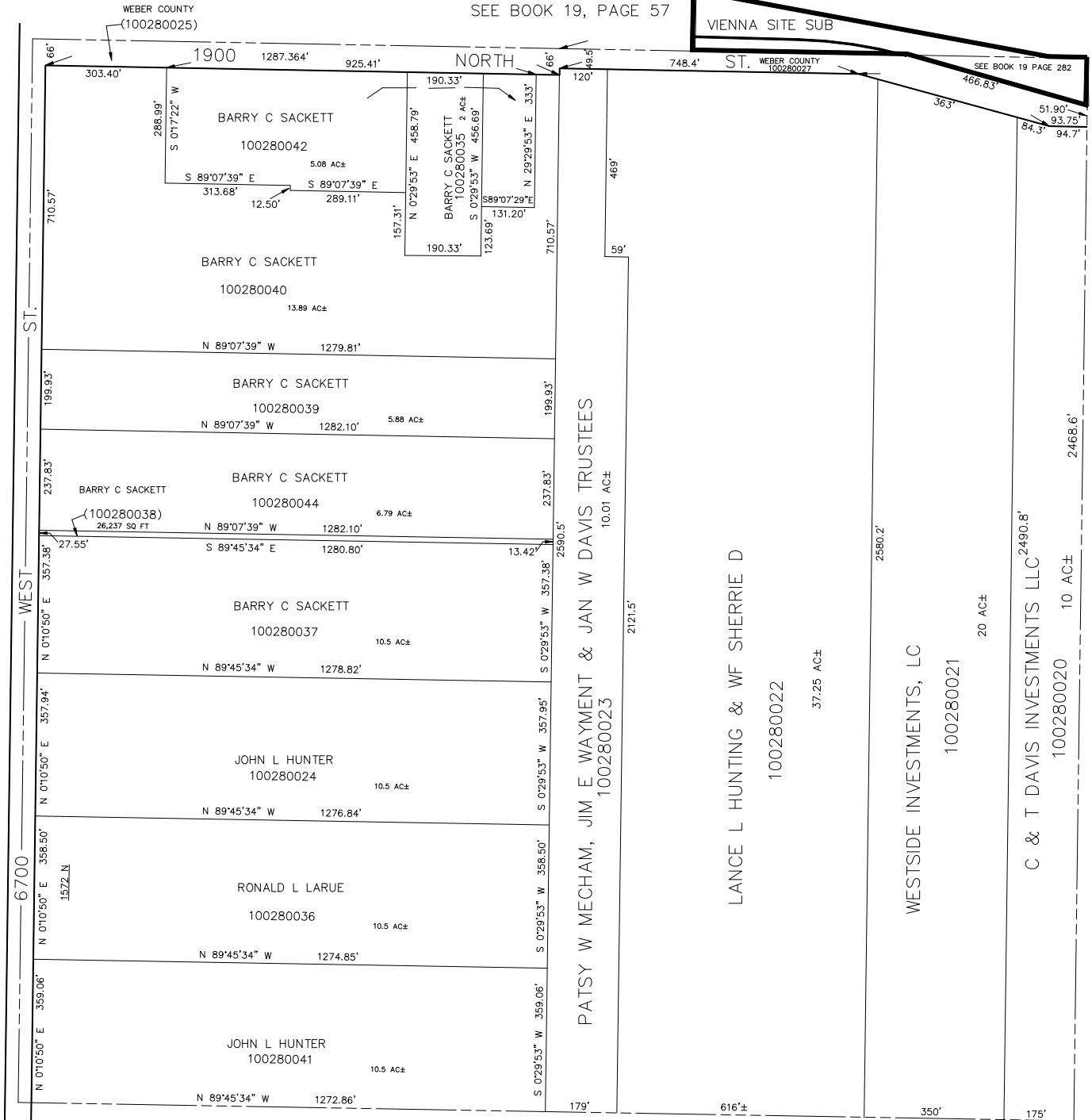
SEE BOOK 19, PAGE 57

VIENNA SITE SUB

SEE BOOK 19 PAGE 282

SEE PAGE 29

SEE PAGE 28



SEE PAGE 28-2