

# SECTION 4, T.6N., R.3W., S.L.B. & M.

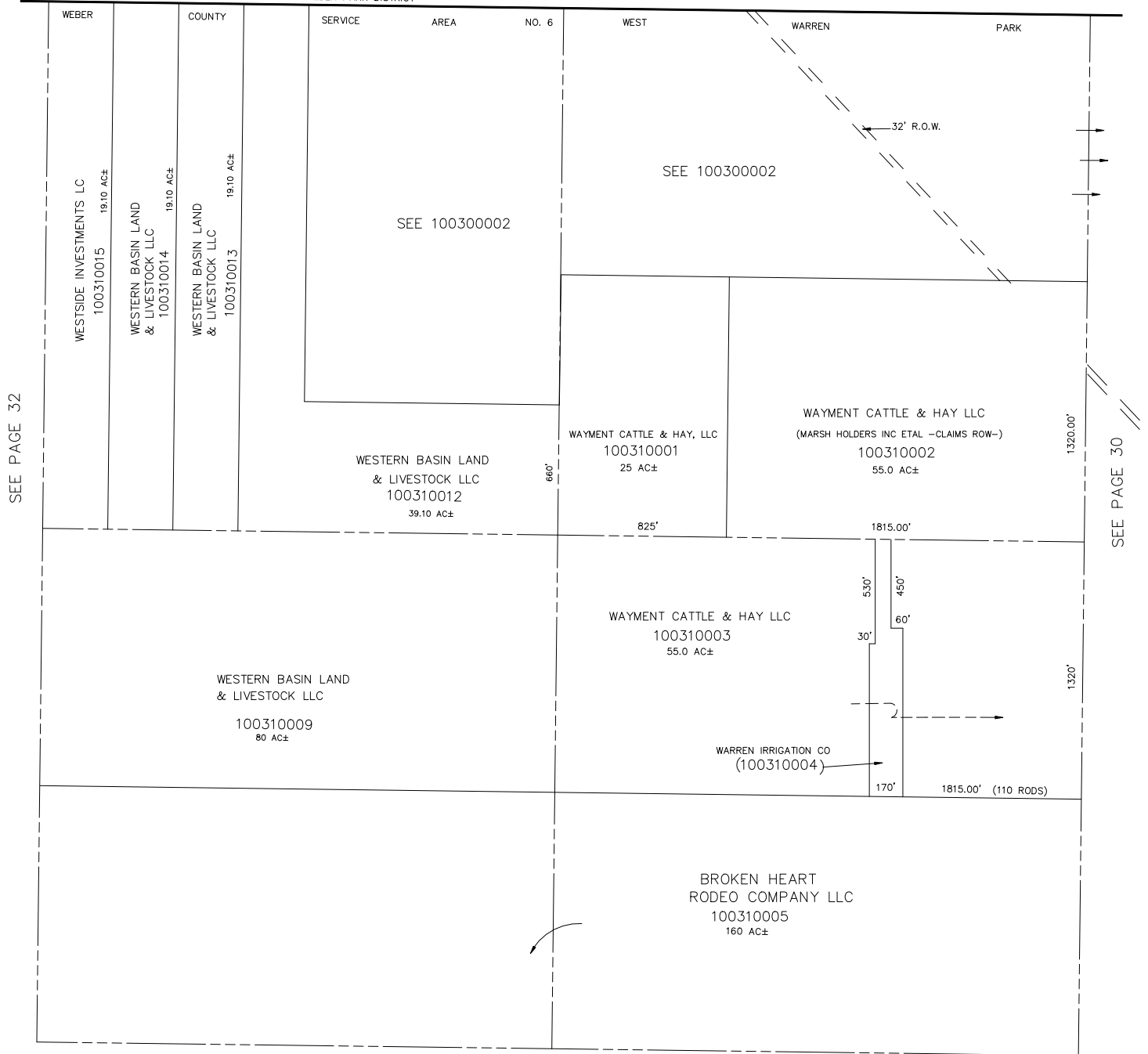
IN WEBER COUNTY

TAXING UNIT: 302

SCALE 1" = 400'

SEE BOOK 19, PAGE 54

WESTERN WEBER PARK DISTRICT



SEE PAGE 32

SEE PAGE 30

SEE PAGE 33