

# SECTION 21, T.6N., R.3W., S.L.B.& M.

IN WEBER COUNTY

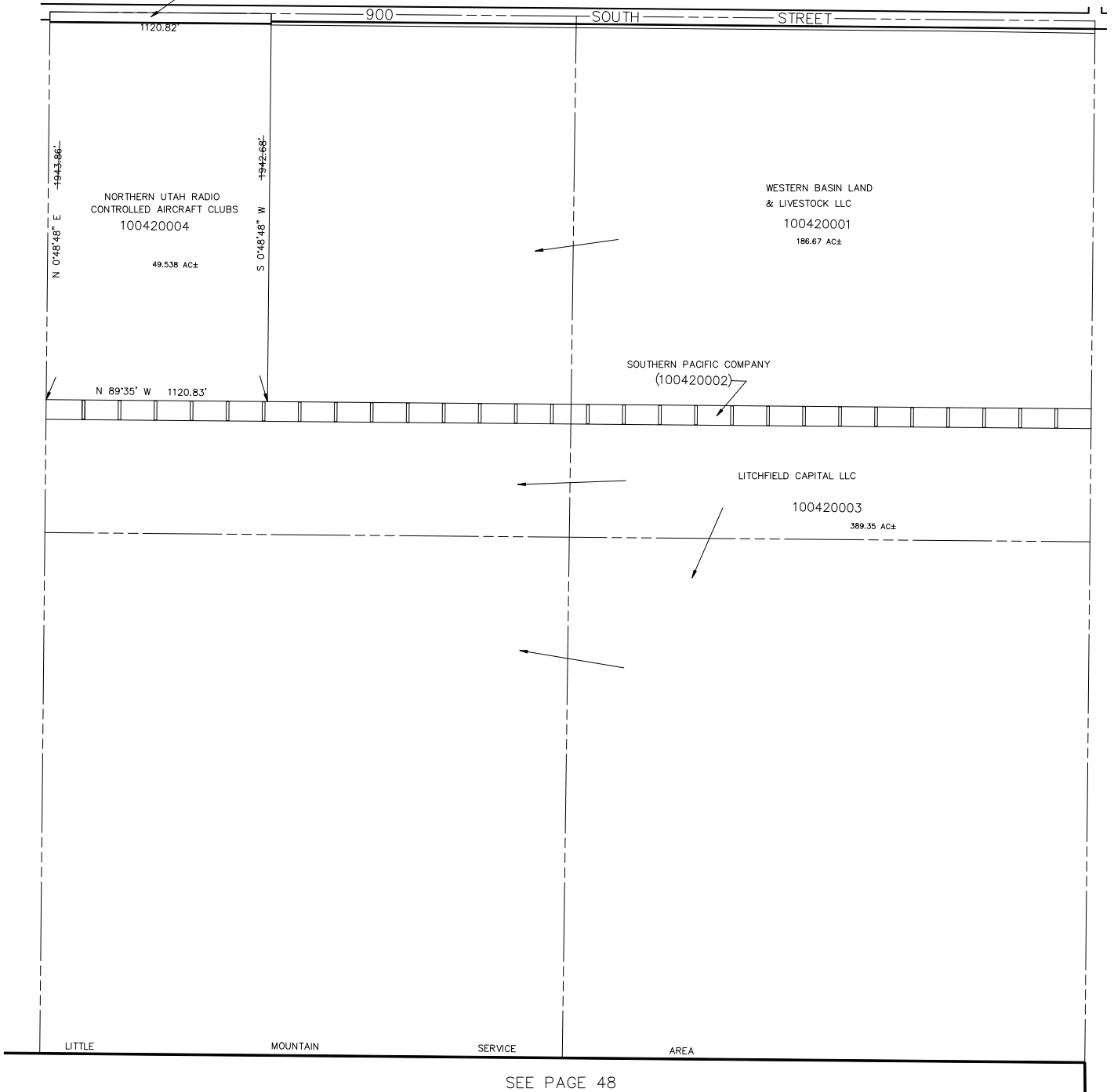
SCALE 1" = 400'

42

TAXING UNIT: 389

SEE PAGE 38

(WEBER COUNTY)  
100420005  
3.17 AC±



SEE PAGE 48

\*FOR TAX PURPOSES ONLY\*

SEE PAGE 41

SEE PAGE 43