

PART OF SE 1/4 OF SE 1/4 SEC. 15, T.6N., R.3W., S.L.B. & M.
DAVIS CUP SUBDIVISION

66

TAXING UNIT: 303

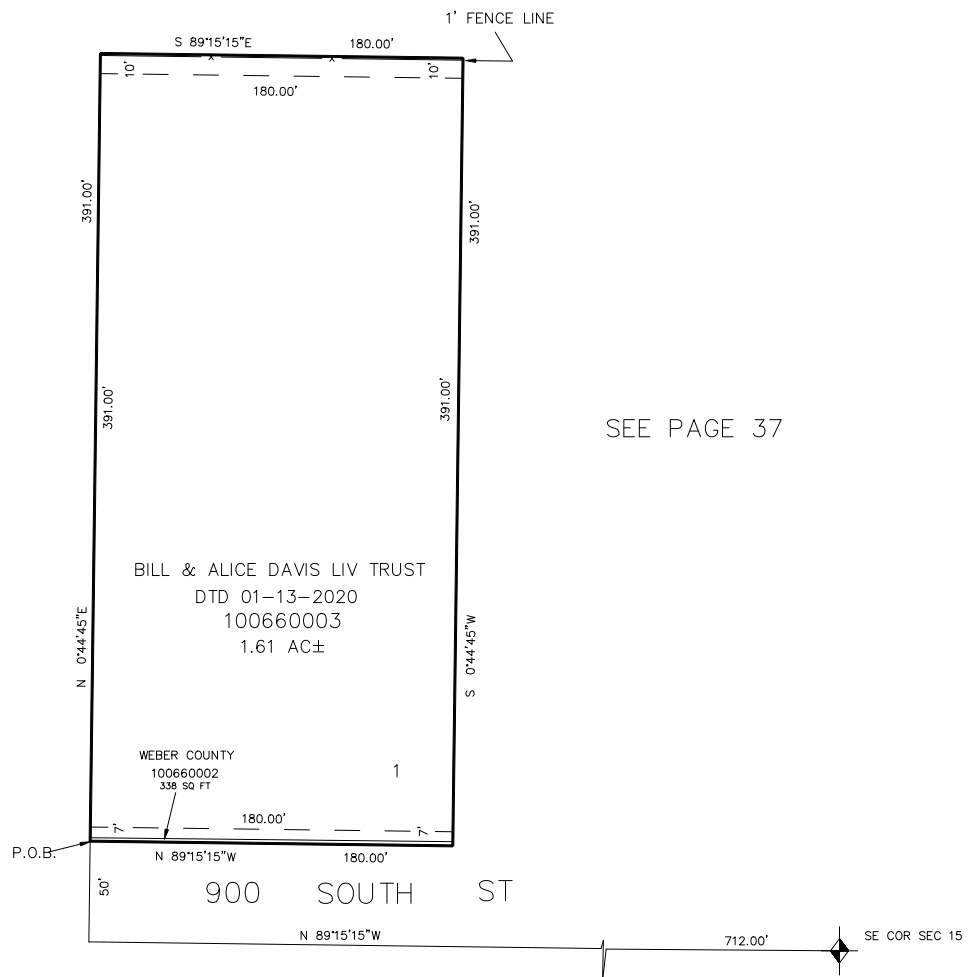
IN WEBER COUNTY

SCALE 1"=50'

SEE PAGE 37

SEE PAGE 37

SEE PAGE 37



FOR COMPLETE ENG. DATA
SEE ORIG. DED. PLAT IN
BOOK 29 PAGE 41.

SEE PAGE 43