

PART OF THE S.E. 1/4 OF SEC. 12, T.5N., R.3W., S.L.B. & M.
TOKEN ACRES SUBDIVISION AND

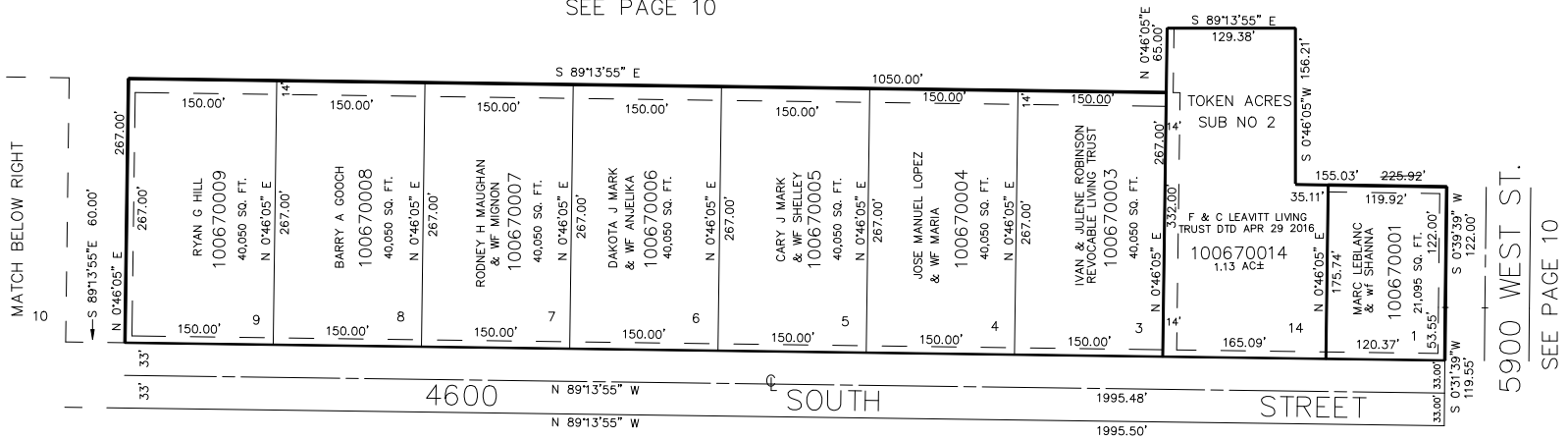
67

TAXING UNIT: 376

IN HOOPER CITY
SCALE 1" = 100'

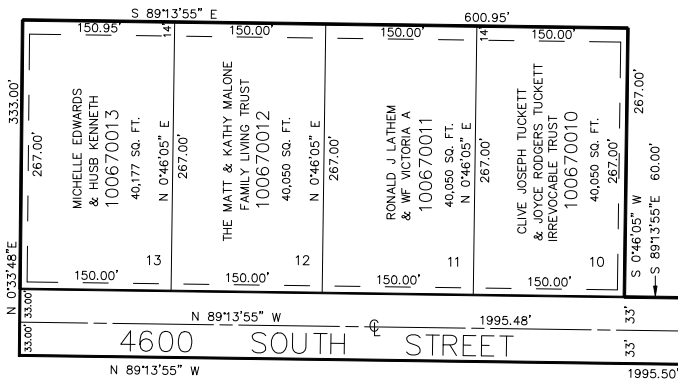
TOKEN ACRES
SUB NO 2*

SEE PAGE 10



SEE PAGE 10

SEE
PAGE
10



SEE PAGE 10

7' UTILITY & DRAINAGE EASEMENTS EACH
SIDE OF PROPERTY LINES AS INDICATED
BY DASHED LINES, UNLESS OTHERWISE SHOWN.

NOTE: 4600 SOUTH STREET WAS
ESTABLISHED FROM EXISTING
R.O.W. FENCES.

FOR COMPLETE ENG DATA SEE
ORIGINAL DEDICATION PLAT IN
BOOK 30, PAGE 86 OF RECORDS.

*FOR COMPLETE ENG DATA SEE
ORIGINAL DEDICATION PLAT IN
BOOK 48, PAGE 04 OF RECORDS.

FOR TAX PURPOSES ONLY