

PART OF THE S.W. 1/4, SEC. 12, T.5N., R.3W., S.L.B. & M.  
**SAGEWOOD ESTATES, PHASE 2**

68

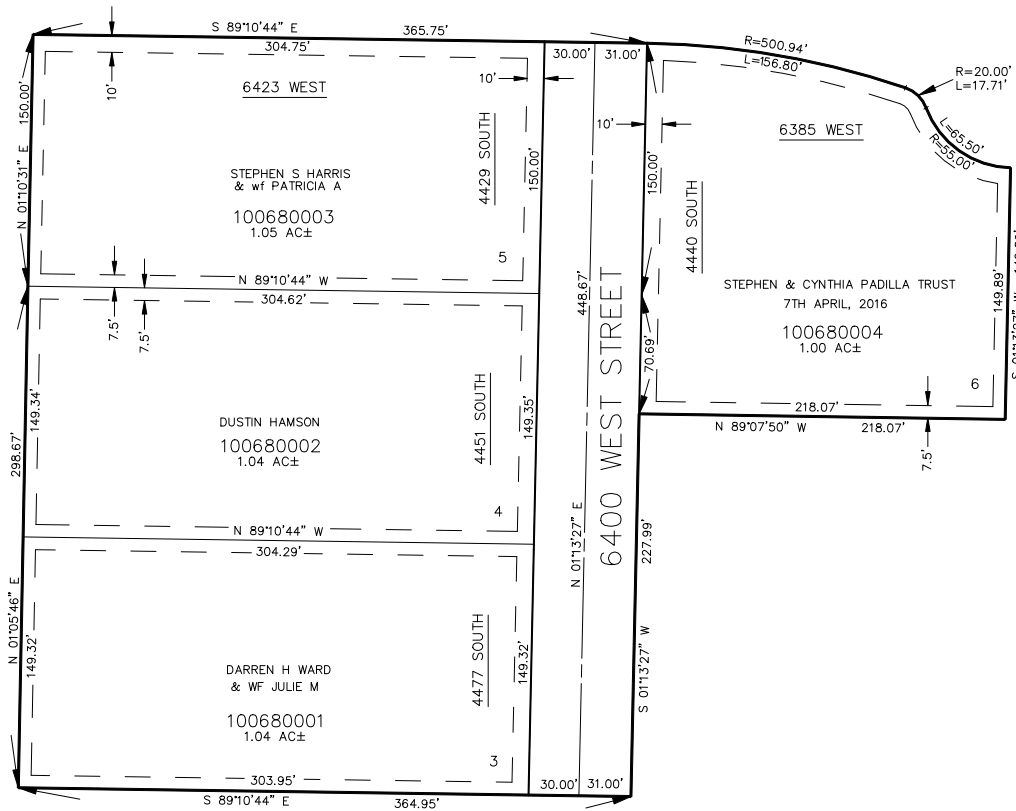
IN HOOPER CITY  
 SCALE 1" = 60'

TAXING UNIT: 376

SEE PAGE 11

SEE PAGE 11

SEE PAGE 11



SEE PAGE 11

UTILITY & DRAINAGE EASEMENTS:  
 7.5' ON SIDE AND REAR PROPERTY LINES  
 10' ON FRONT OR STREET PROPERTY LINES

FOR COMPLETE ENG DATA SEE  
 ORIGINAL DEDICATION PLAT IN  
 BOOK 37, PAGE 21 OF RECORDS.