

PART OF THE N.E. 1/4, SEC. 13, T.6N., R.3W., S.L.B. & M.
GIORDANO SUBDIVISION

IN WEBER COUNTY

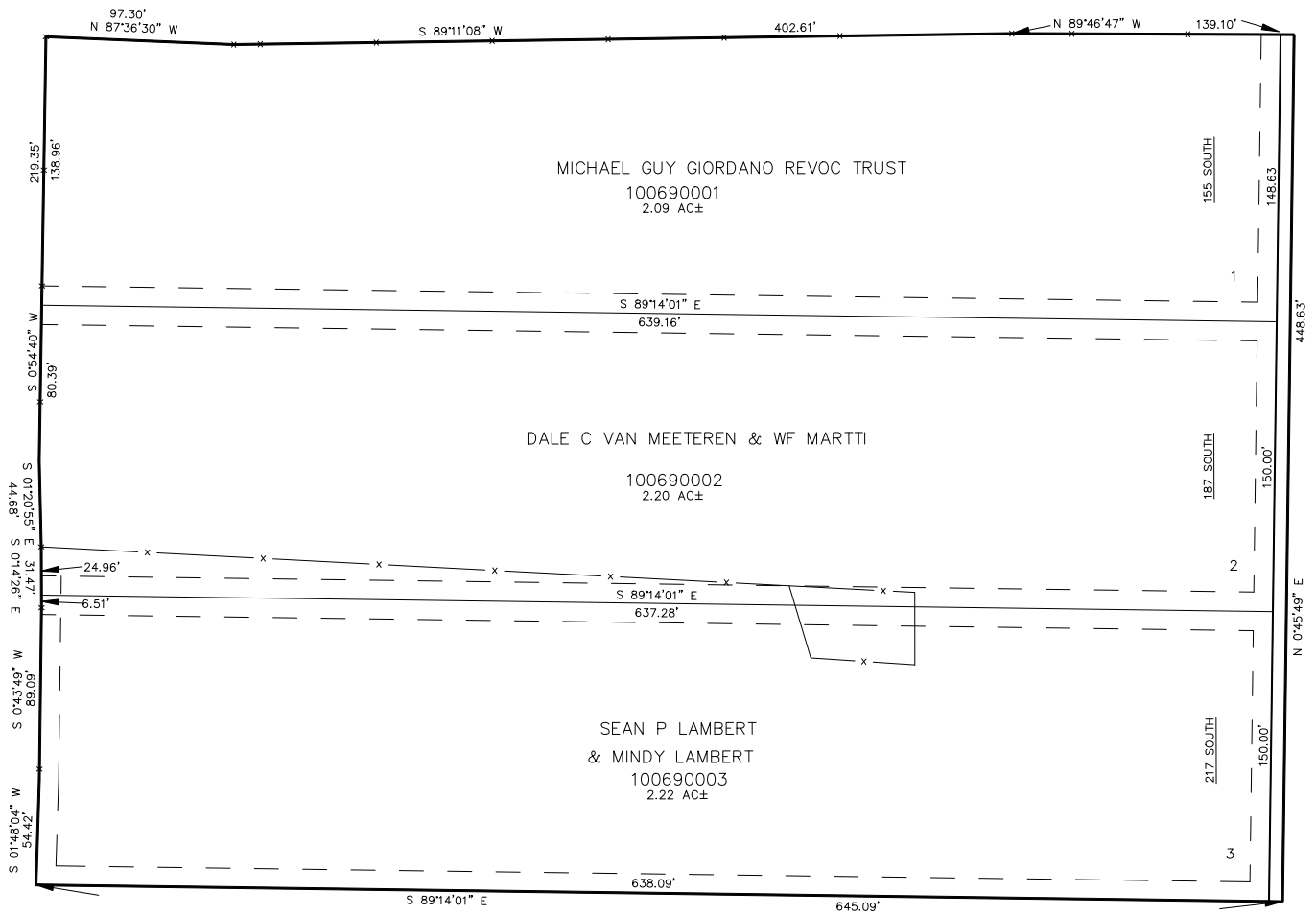
TAXING UNIT: 531

SCALE 1" = 50'

69

SEE PAGE 35

SEE PAGE 35



SEE PAGE 35

SEE PAGE 35

FOR COMPLETE ENG DATA SEE
ORIGINAL DEDICATION PLAT IN
BOOK 37, PAGE 75 OF RECORDS.

10' UTILITY & DRAINAGE EASEMENTS EACH
SIDE OF PROPERTY LINES AS INDICATED
BY DASHED LINES EXCEPT AS OTHERWISE
SHOWN.