

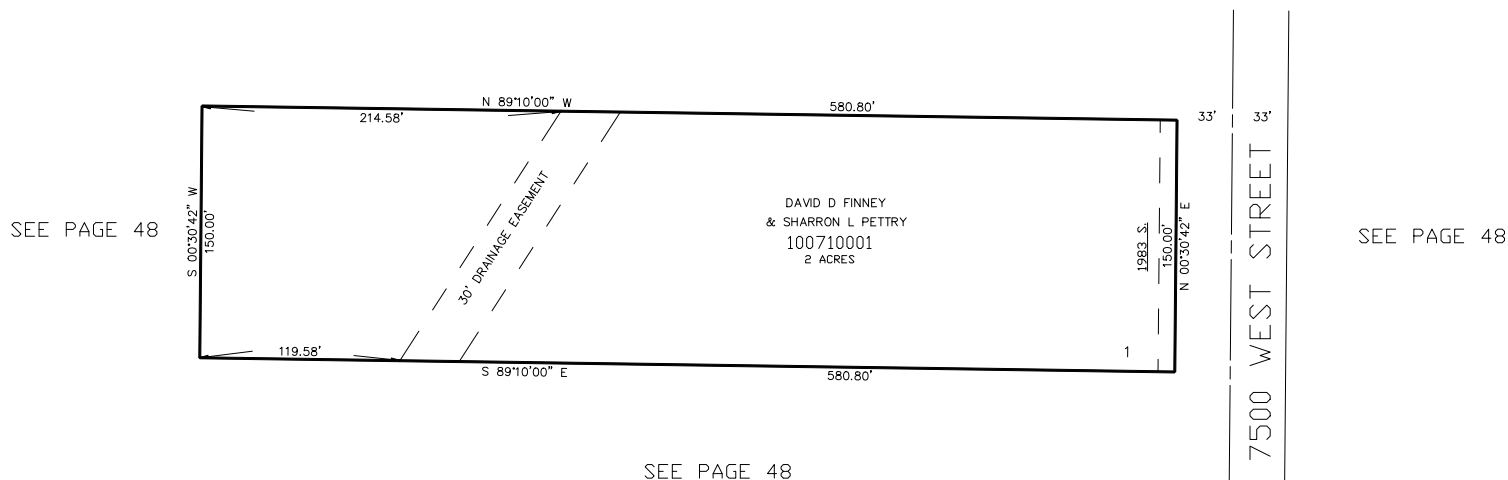
FINNEY SUBDIVISION

IN WEBER COUNTY

TAXING UNIT: 302

SCALE 1" = 60'

SEE PAGE 48



10' UTILITY & DRAINAGE EASEMENTS EACH
SIDE OF PROPERTY LINES AS INDICATED
BY DASHED LINES EXCEPT AS OTHERWISE
SHOWN.

FOR COMPLETE ENG DATA SEE
ORIGINAL DEDICATION PLAT IN
BOOK 45, PAGE 48 OF RECORDS.

FOR TAX PURPOSES ONLY