

PART OF THE NE.1\4, OF SECTION 13, T.6N., R.3W., S.L.B. & M.

90

# JOHNSON ESTATE

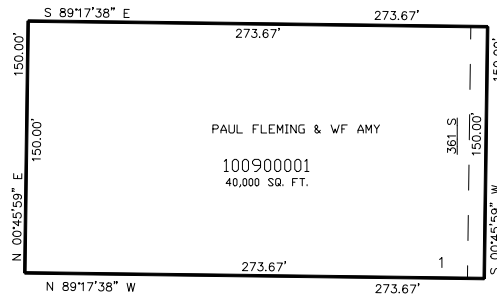
IN WEBER COUNTY

TAXING UNIT: 531

SCALE 1" = 60'

SEE PAGE 35

SEE PAGE 35



5900 WEST STREET

SEE PAGE 35

SEE PAGE 35

10' UTILITY & DRAINAGE EASEMENTS EACH  
SIDE OF PROPERTY LINES AS INDICATED  
BY DASHED LINES EXCEPT AS OTHERWISE  
SHOWN.

FOR COMPLETE ENG DATA SEE  
ORIGINAL DEDICATION PLAT IN  
BOOK 53, PAGE 83 OF RECORDS.