

PART OF THE S.W. 1/4, OF SECTION 15, T.6N., R.3W., S.L.B. & M.
CLIFF FLATS SUBDIVISION – PHASE 1

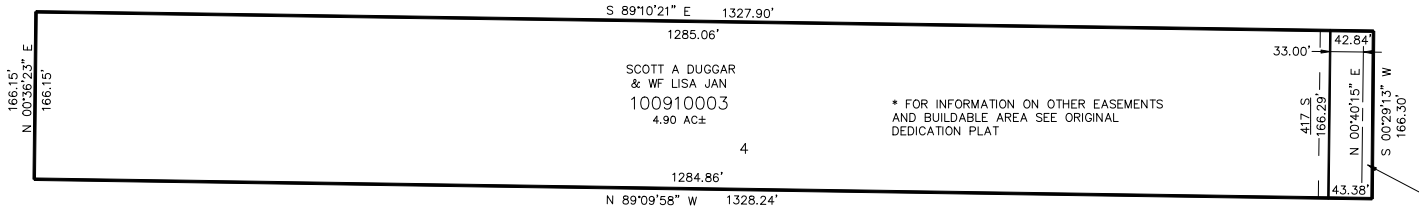
IN WEBER COUNTY

TAXING UNIT: 389

SCALE 1" = 100'

91

SEE PAGE 37

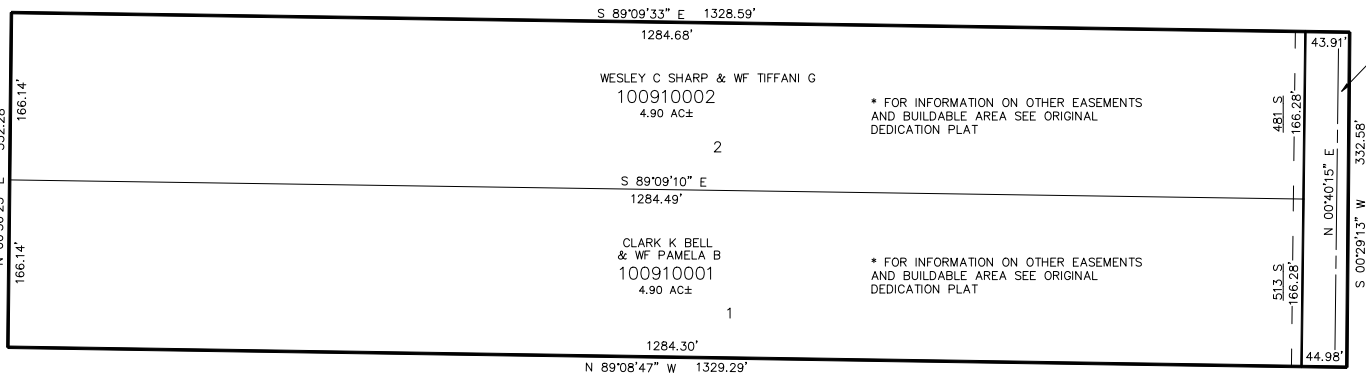


ROAD DEDICATION

7900 WEST STREET

SEE PAGE 37

SEE PAGE 37



SEE PAGE 78

10' UTILITY & DRAINAGE EASEMENTS EACH
SIDE OF PROPERTY LINES AS INDICATED
BY DASHED LINES EXCEPT AS OTHERWISE
SHOWN.

FOR COMPLETE ENG DATA SEE
ORIGINAL DEDICATION PLAT IN
BOOK 53, PAGE 85 OF RECORDS.