

PART OF THE S1/2., OF SECTION 12, T.5N., R.3W., S.L.B. & M.
THOMAS S LOWE SUBDIVISION AMENDED

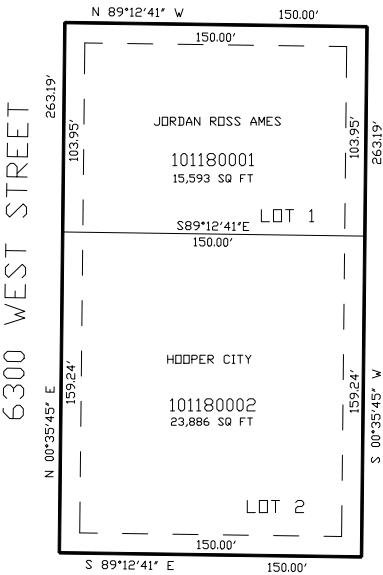
TAXING UNIT: 376

IN HOOPER CITY
SCALE 1" =50'

SEE PAGE 10

4600 SOUTH STREET

SEE PAGE 10



SEE PAGE 72

SEE PAGE 72

FOR COMPLETE ENG DATA SEE
ORIGINAL DEDICATION PLAT IN
BOOK 65, PAGE 36 OF RECORDS.

10' UTILITY & DRAINAGE EASEMENTS EACH
SIDE OF PROPERTY LINES AS INDICATED
BY DASHED LINES EXCEPT AS OTHERWISE
SHOWN.