

PART OF THE SE.1/4, OF SECTION 22, T.6N., R.3W., S.L.B. & M.

138

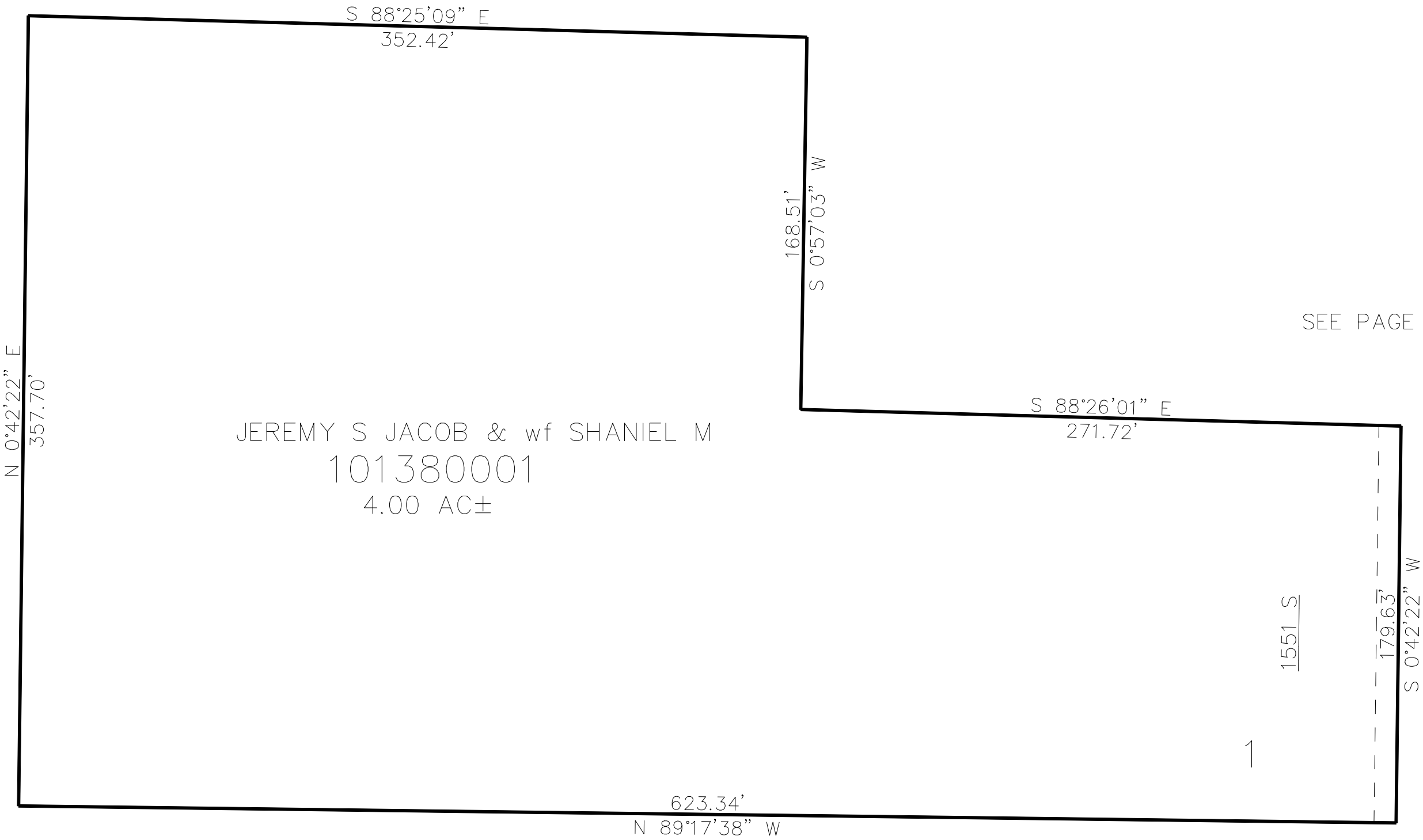
JERRY AND KATIE HOMESTEAD

IN WEBER COUNTY

TAXING UNIT: 303

SCALE 1" = 50'

SEE PAGE 43



SEE PAGE 43

JEREMY S JACOB & wf SHANIEL M
101380001
4.00 AC±

SEE PAGE 43

10' UTILITY & DRAINAGE EASEMENTS EACH
SIDE OF PROPERTY LINES AS INDICATED
BY DASHED LINES EXCEPT AS OTHERWISE
SHOWN.

FOR COMPLETE ENG DATA SEE
ORIGINAL DEDICATION PLAT IN
BOOK 74, PAGE 41 OF RECORDS.