

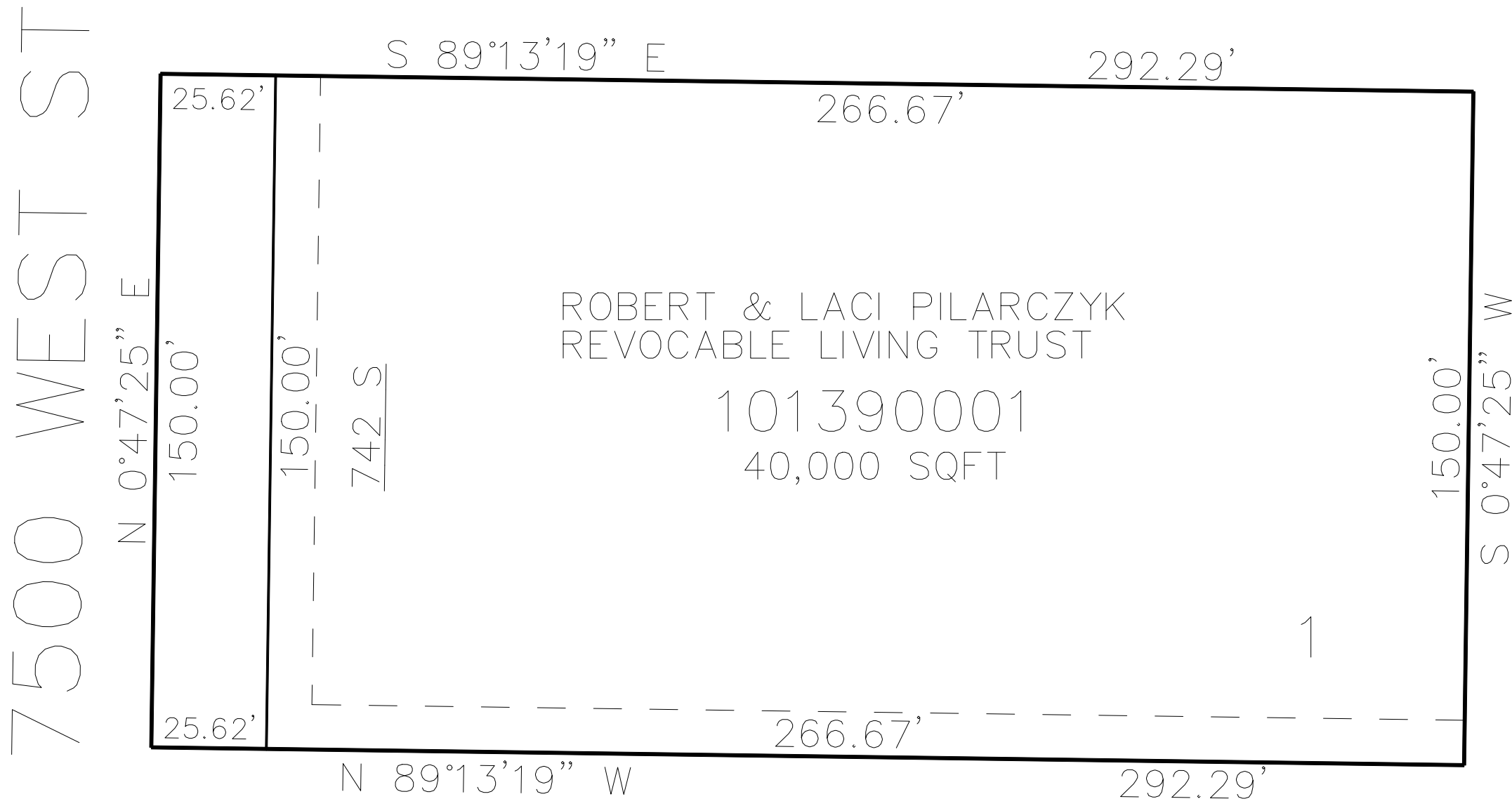
PART OF THE SW.1/4, OF SECTION 14, T.6N., R.3W., S.L.B. & M.  
JOHN PAUL CARDON SUBDIVISION NO.5

139

TAXING UNIT: 303

IN WEBER COUNTY  
SCALE 1" = 30'

SEE PAGE 36



SEE PAGE 36

10' UTILITY & DRAINAGE EASEMENTS EACH  
SIDE OF PROPERTY LINES AS INDICATED  
BY DASHED LINES EXCEPT AS OTHERWISE  
SHOWN.

FOR COMPLETE ENG DATA SEE  
ORIGINAL DEDICATION PLAT IN  
BOOK 74, PAGE 68 OF RECORDS.